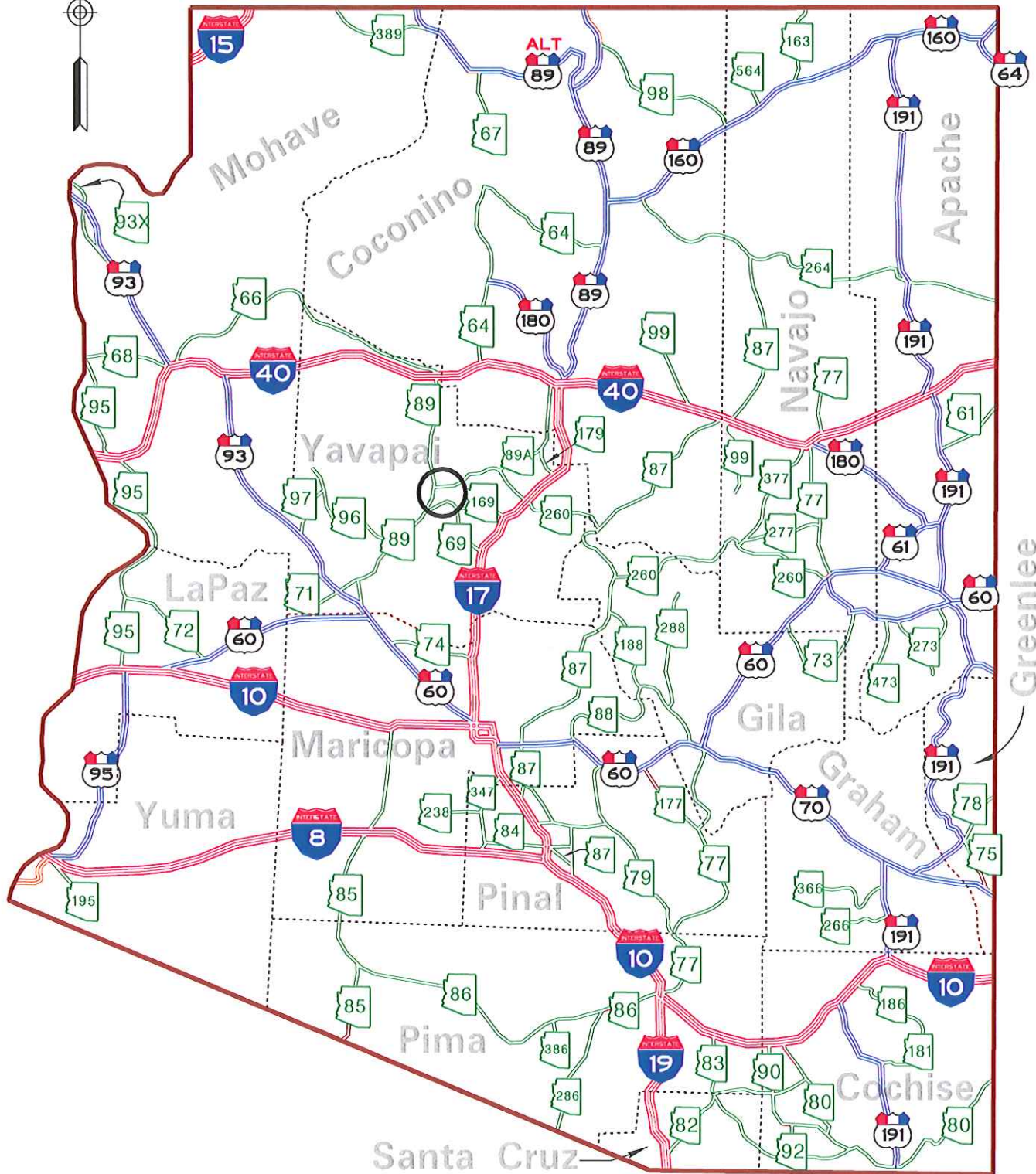


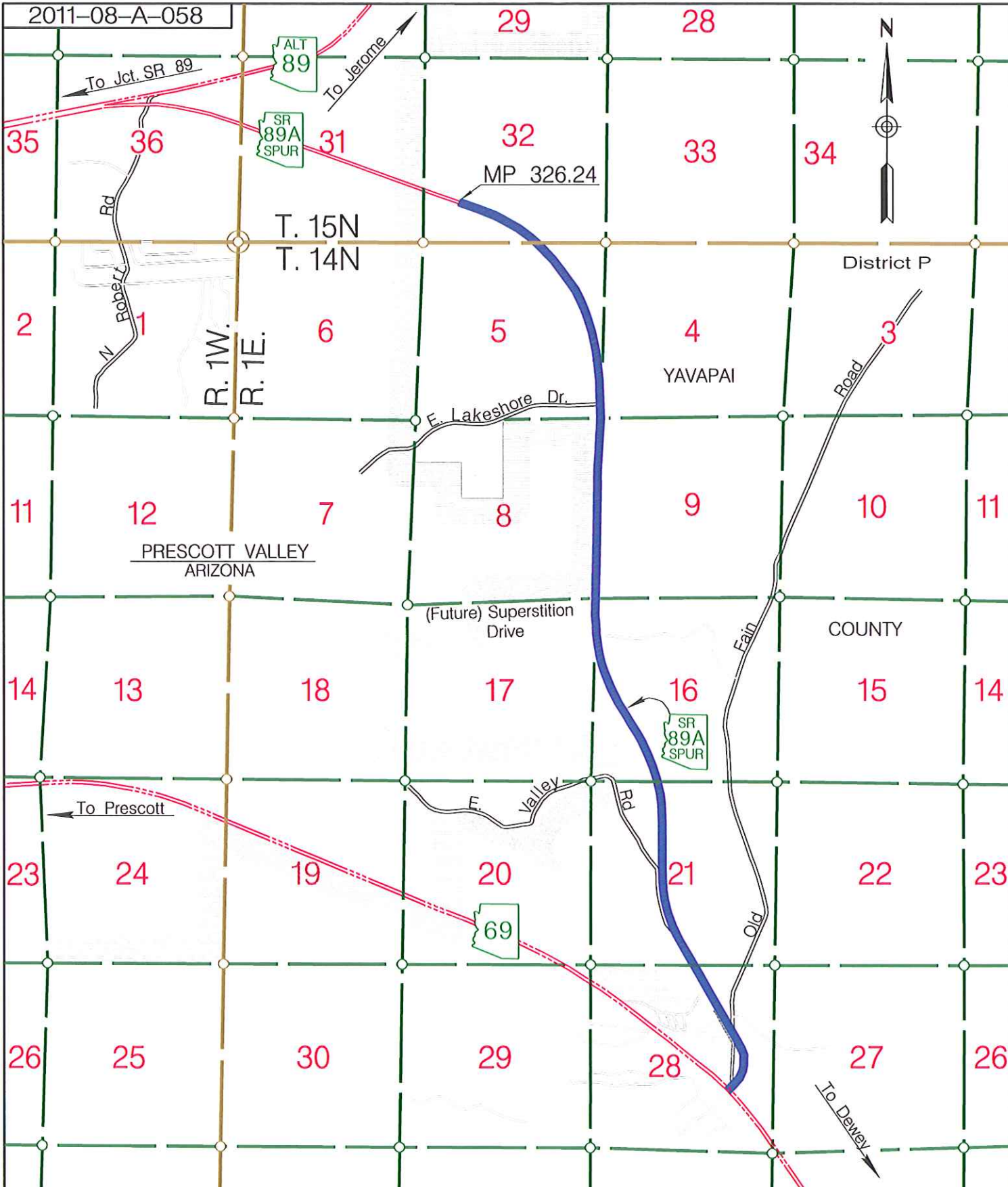
○ = AREA OF ESTABLISHMENT
SEE SHEET 2 OF 2 FOR DETAILS



A LEGIBLE COPY CAN BE OBTAINED FROM THE
 ARIZONA DEPARTMENT OF TRANSPORTATION
 STATE ENGINEER'S OFFICE
 RIGHT OF WAY GROUP
 205 SOUTH 17TH AVENUE
 PHOENIX, ARIZONA 85007
 MAIL DROP 612E

089A YV 326 H8160
 S89-A (200) A
 PRESCOTT-FLAGSTAFF HWY
 Fain Road MP 326.24 to SR 69
 Yavapai County
 August 18, 2011 SHEET 1 OF 2

2011-08-A-058



A LEGIBLE COPY CAN BE OBTAINED FROM THE ARIZONA DEPARTMENT OF TRANSPORTATION STATE ENGINEER'S OFFICE RIGHT OF WAY GROUP 205 SOUTH 17TH AVENUE PHOENIX, ARIZONA 85007 MAIL DROP 612E

AREA OF ESTABLISHMENT

APPENDIX "A"

089A YV 326 H8160
S89-A (200) A
PRESCOTT-FLAGSTAFF HWY
Fain Road MP 326.24 to SR 69
Yavapai County
August 18, 2011 SHEET 2 OF 2