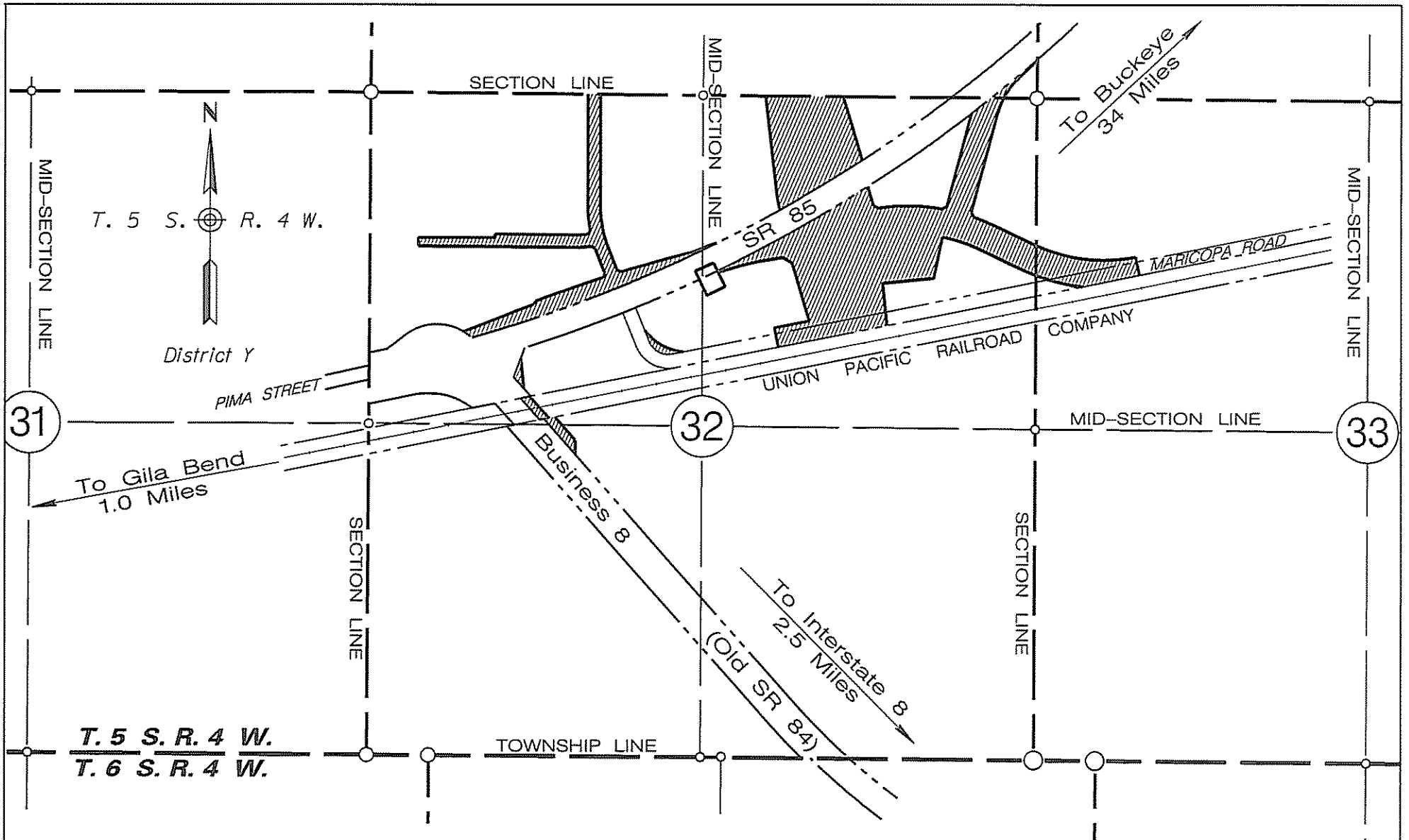


AREA OF ESTABLISHMENT
SEE SHEET 2 OF 2
FOR DETAILS

A LEGIBLE COPY CAN BE OBTAINED FROM THE
ARIZONA DEPARTMENT OF TRANSPORTATION
STATE ENGINEERS OFFICE
RIGHT OF WAY GROUP
205 SOUTH 17TH AVENUE
PHOENIX, ARIZONA 85007
MAIL DROP 612E

APPENDIX "A"

085 MA 119 H6407 01R
GILA BEND \ BUCKEYE HWY
SR 85 - Interstate 8 T.I.
Maricopa County
NOV. 20, 2009 SHEET 1 OF 2



A LEGIBLE COPY CAN BE OBTAINED FROM THE
 ARIZONA DEPARTMENT OF TRANSPORTATION
 STATE ENGINEERS OFFICE
 RIGHT OF WAY GROUP
 205 SOUTH 17TH AVENUE
 PHOENIX, ARIZONA 85007
 MAIL DROP 612E

AREA OF 
 ESTABLISHMENT

APPENDIX "A"

085 MA 119 H6407 01R
 GILA BEND \ BUCKEYE HWY
 SR 85 - Interstate 8 T.I.
 Maricopa County
 NOV. 20, 2009 SHEET 2 OF 2