

AREA OF AMENDMENT
SEE SHEET 2 OF 2
FOR DETAILS

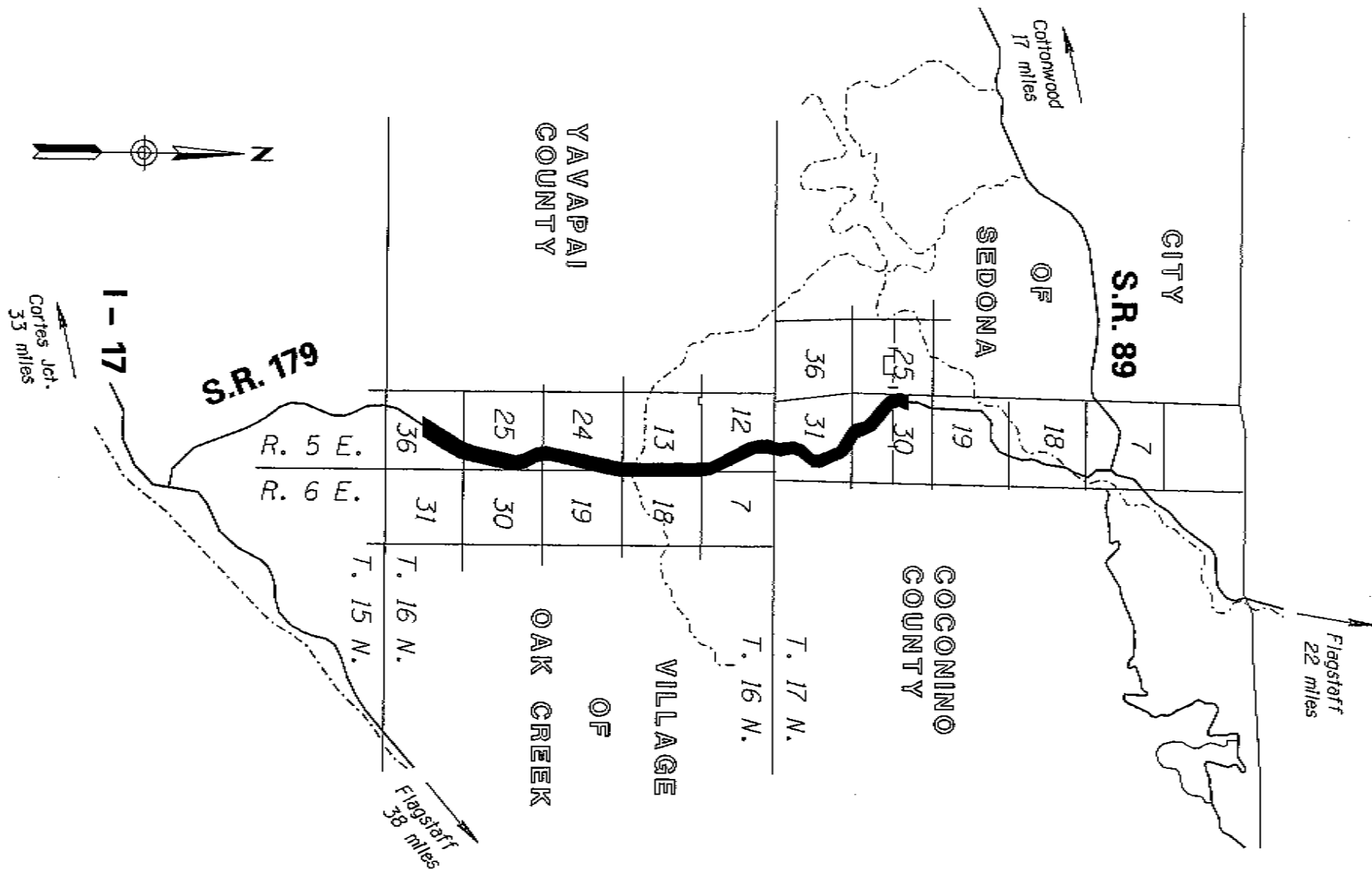
THIS PLAT WAS DIGITALLY PRODUCED
FROM ARIZONA DEPARTMENT OF
TRANSPORTATION
GENERAL HIGHWAY MAP

RIGHT OF WAY PLANS SECTION
REVISED MAY 17, 2000

APPENDIX "A"

179 YV 304 H3414 02R / S 238-805
RIMROCK - SEDONA HWY SR 179
Village of Oak Creek - Jct 89A
Yavapai County
Coconino County

DATE: NOV. 17, 2006 SHEET 1 OF 2



THIS PLAT WAS DIGITALLY PRODUCED
FROM ARIZONA DEPARTMENT OF
TRANSPORTATION
GENERAL HIGHWAY MAP

RIGHT OF WAY PLANS SECTION
REVISED JULY 17, 2000

AREA OF
AMENDMENT

APPENDIX "A"

179 YV 304 H3414 02R / S 238-805
RIMROCK - SEDONA HWY SR 179
Village of Oak Creek - Jct 89A
Yavapai County
Coconino County

DATE: NOV. 17, 2006 SHEET 2 OF 2