

AREA OF ESTABLISHMENT
SEE SHEET 2 OF 2
FOR DETAILS

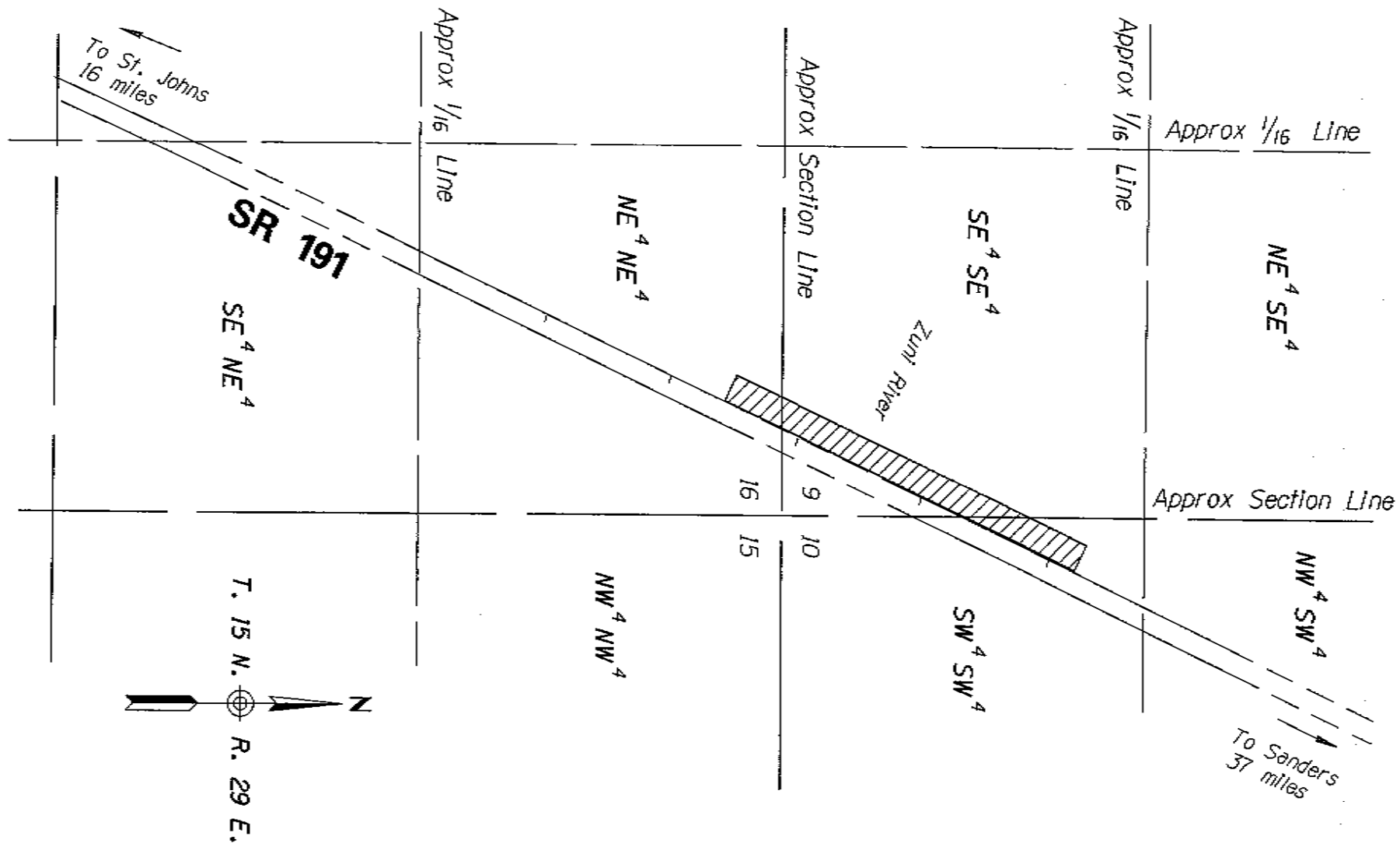
THIS PLAT WAS DIGITALLY PRODUCED
FROM ARIZONA DEPARTMENT OF
TRANSPORTATION
GENERAL HIGHWAY MAP

RIGHT OF WAY PLANS SECTION
REVISED MAY 17, 2000

APPENDIX "A"

191 AP 328 H5551 01R / N 900-0-700
ST JOHNS - SANDERS HWY
Standard Parallel - Witch Well
Apache County

DATE: SEPT. 15, 2006 SHEET: 1 OF 2



THIS PLAT WAS DIGITALLY PRODUCED
FROM ARIZONA DEPARTMENT OF
TRANSPORTATION
GENERAL HIGHWAY MAP

RIGHT OF WAY PLANS SECTION
REVISED JULY 17, 2000

AREA OF
ESTABLISHMENT



APPENDIX "A"

191 AP 328 H5551 01R / N 900-0-700
ST JOHNS - SANDERS HWY
Standard Parallel - Witch Well
Apache County

DATE: SEPT. 15, 2006 SHEET: 2 OF 2