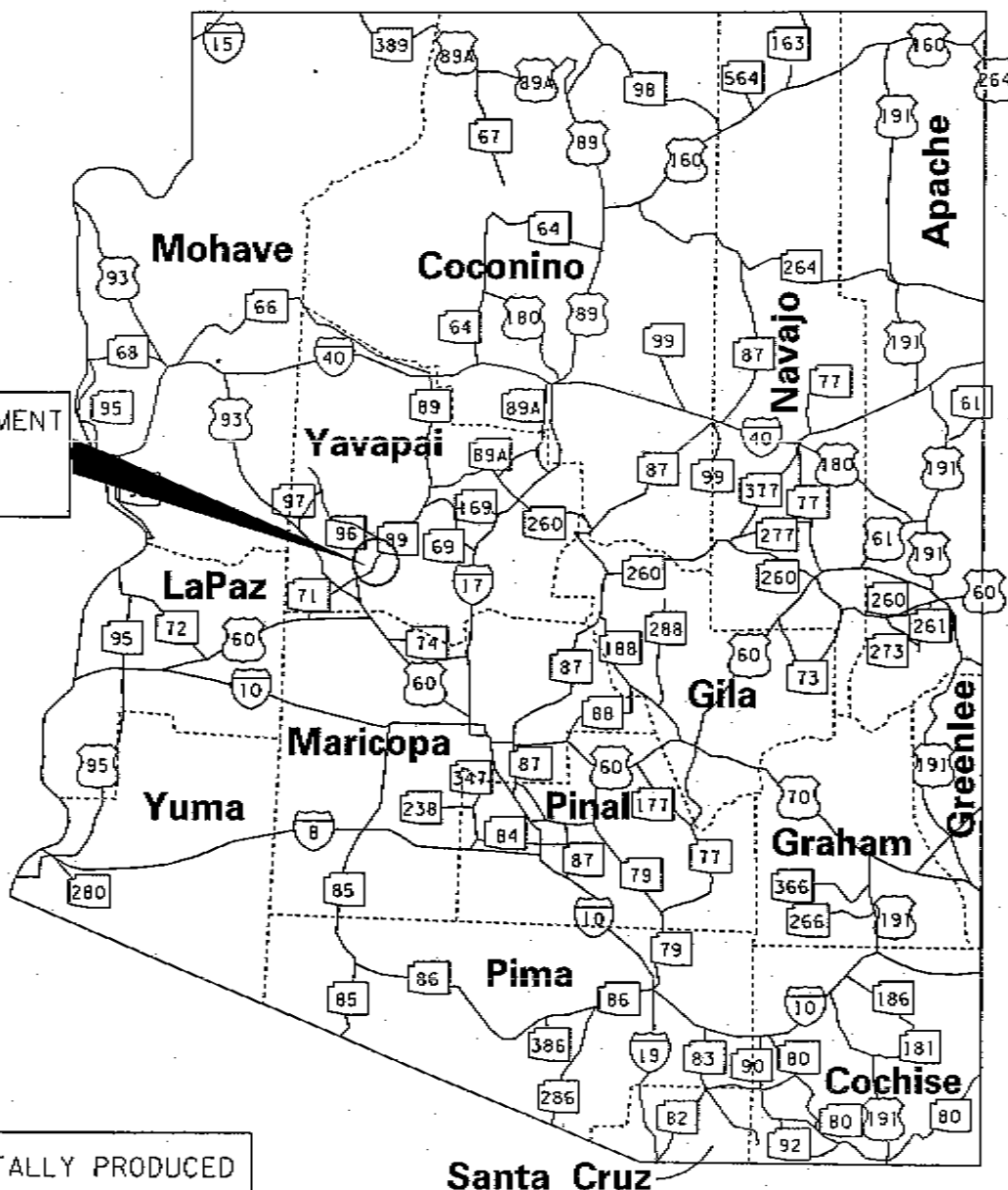


AREA OF ESTABLISHMENT
SEE SHEET 2 OF 2
FOR DETAILS



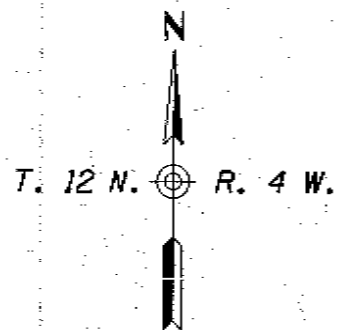
THIS PLAT WAS DIGITALLY PRODUCED
FROM ARIZONA DEPARTMENT OF
TRANSPORTATION
GENERAL HIGHWAY MAP

RIGHT OF WAY PLANS SECTION
REVISED MAY 17, 2000

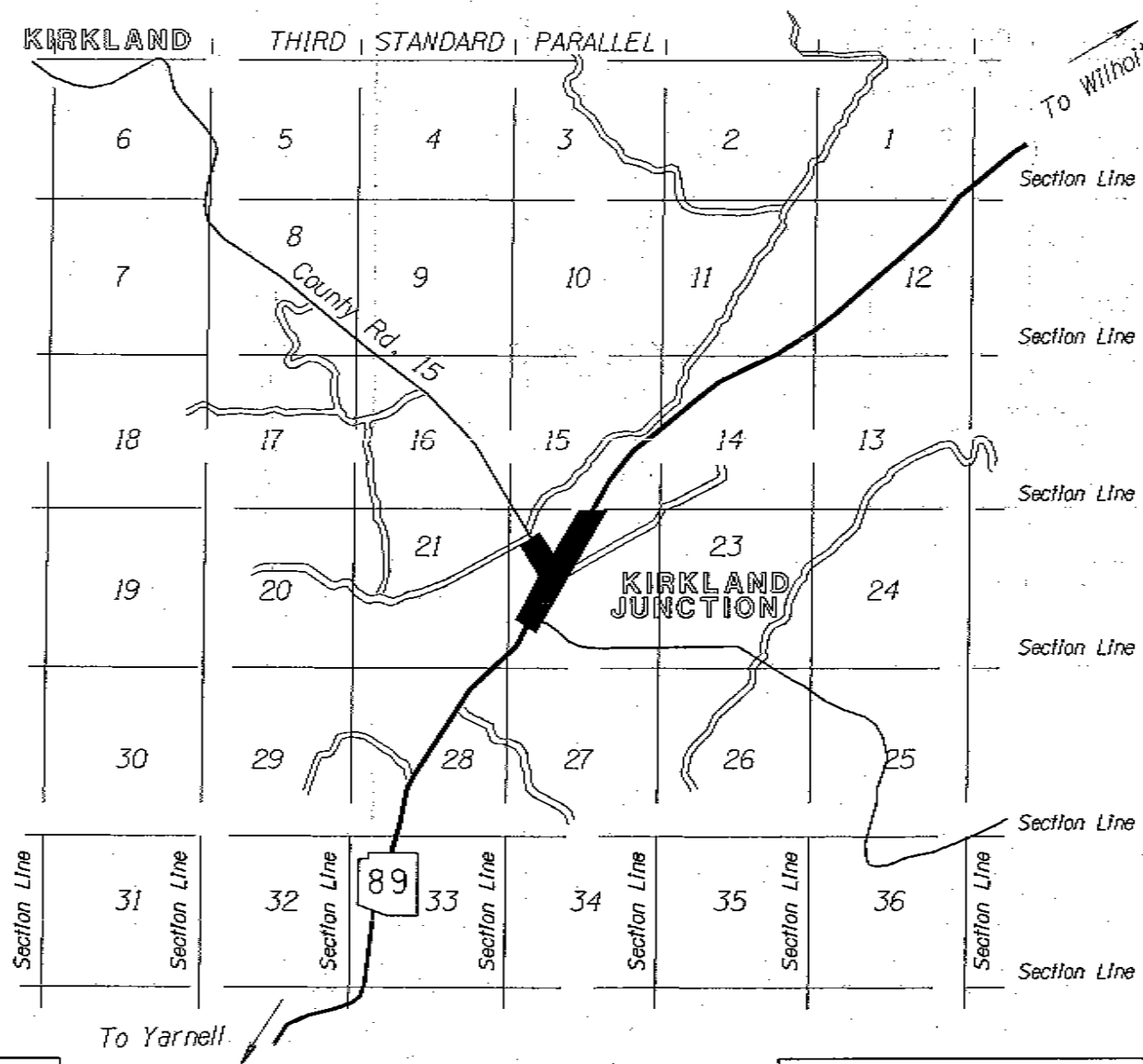
APPENDIX "A"

089 YV 289 H5435 01R / S 089-A-703
WICKENBURG - PRESCOTT
Kirkland Junction-Wagoner Road
Yavapai County

DATE: MARCH 17, 2006 SHEET: 1 OF 2



Section 22



THIS PLAT WAS DIGITALLY PRODUCED
FROM ARIZONA DEPARTMENT OF
TRANSPORTATION
GENERAL HIGHWAY MAP

RIGHT OF WAY PLANS SECTION
REVISED JULY 17, 2000

AREA OF
ESTABLISHMENT

APPENDIX "A"

089 YV 289 H5435 OIR / S 089-A-703
WICKENBURG - PRESCOTT
Kirkland Junction-Wagoner Road
Yavapai County

DATE: MARCH 17, 2006 SHEET: 2 OF 2