

AREA OF ESTABLISHMENT
SEE SHEET 2 OF 2
FOR DETAILS

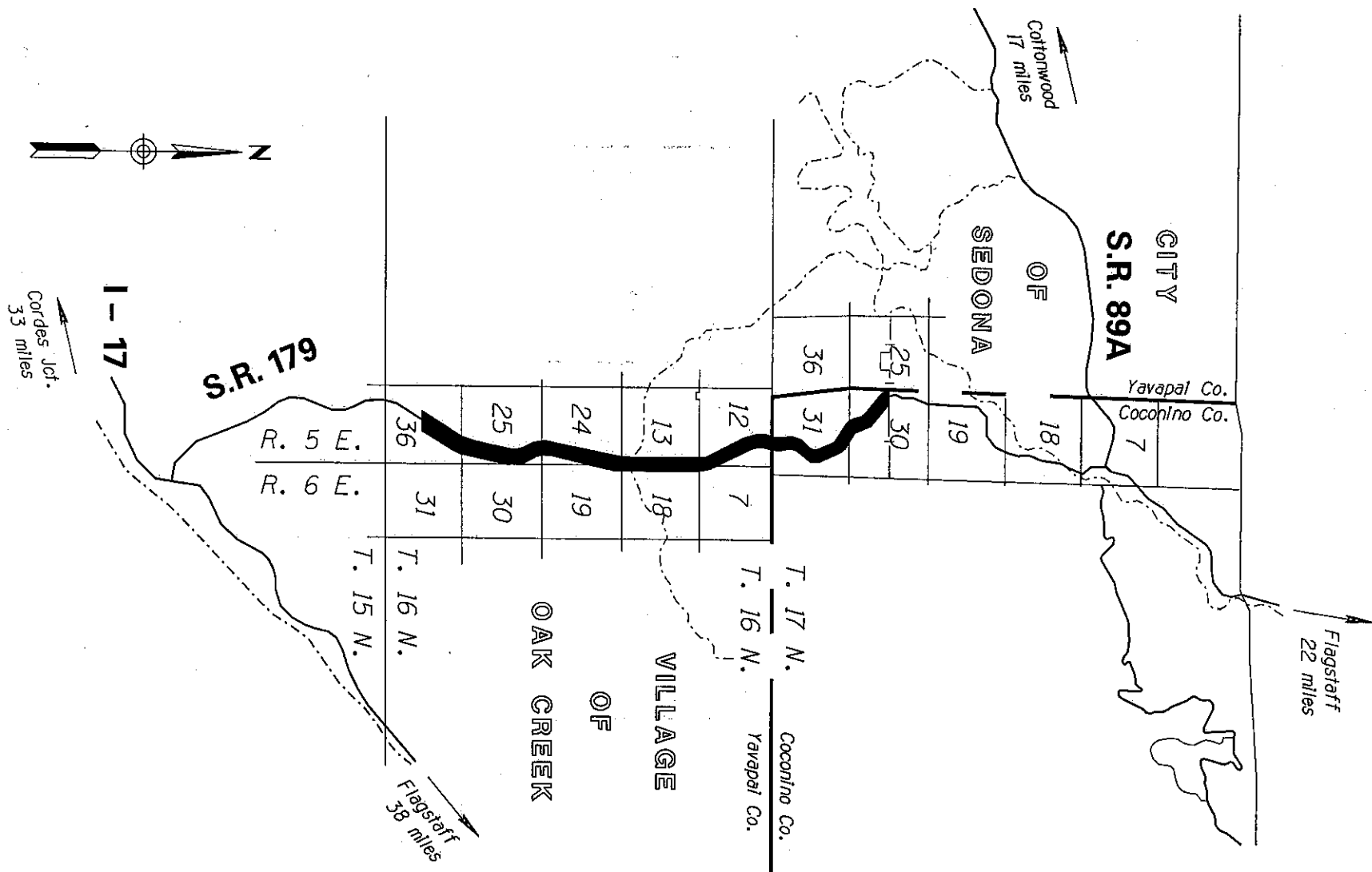
THIS PLAT WAS DIGITALLY PRODUCED
FROM ARIZONA DEPARTMENT OF
TRANSPORTATION
GENERAL HIGHWAY MAP

RIGHT OF WAY PLANS SECTION
REVISED MAY 17, 2000

APPENDIX "A"

179 YV 304 H3414 02R / S 238-805
RIMROCK - SEDONA HWY SR 179
Village of Oak Creek - Jct 89A
Yavapai / Coconino County

DATE: DEC 16, 2005 SHEET 1 OF 2



THIS PLAT WAS DIGITALLY PRODUCED
FROM ARIZONA DEPARTMENT OF
TRANSPORTATION
GENERAL HIGHWAY MAP

RIGHT OF WAY PLANS SECTION
REVISED JULY 17, 2000

AREA OF
ESTABLISHMENT

APPENDIX "A"

179 YV 304 H3414 02R / S 238-805
RIMROCK - SEDONA HWY SR 179
Village of Oak Creek - Jct 89A
Yavapai / Coconino County

DATE: DEC 16, 2005 SHEET 2 OF 2