

AREA OF ESTABLISHMENT
SEE SHEET 2 OF 2
FOR DETAILS

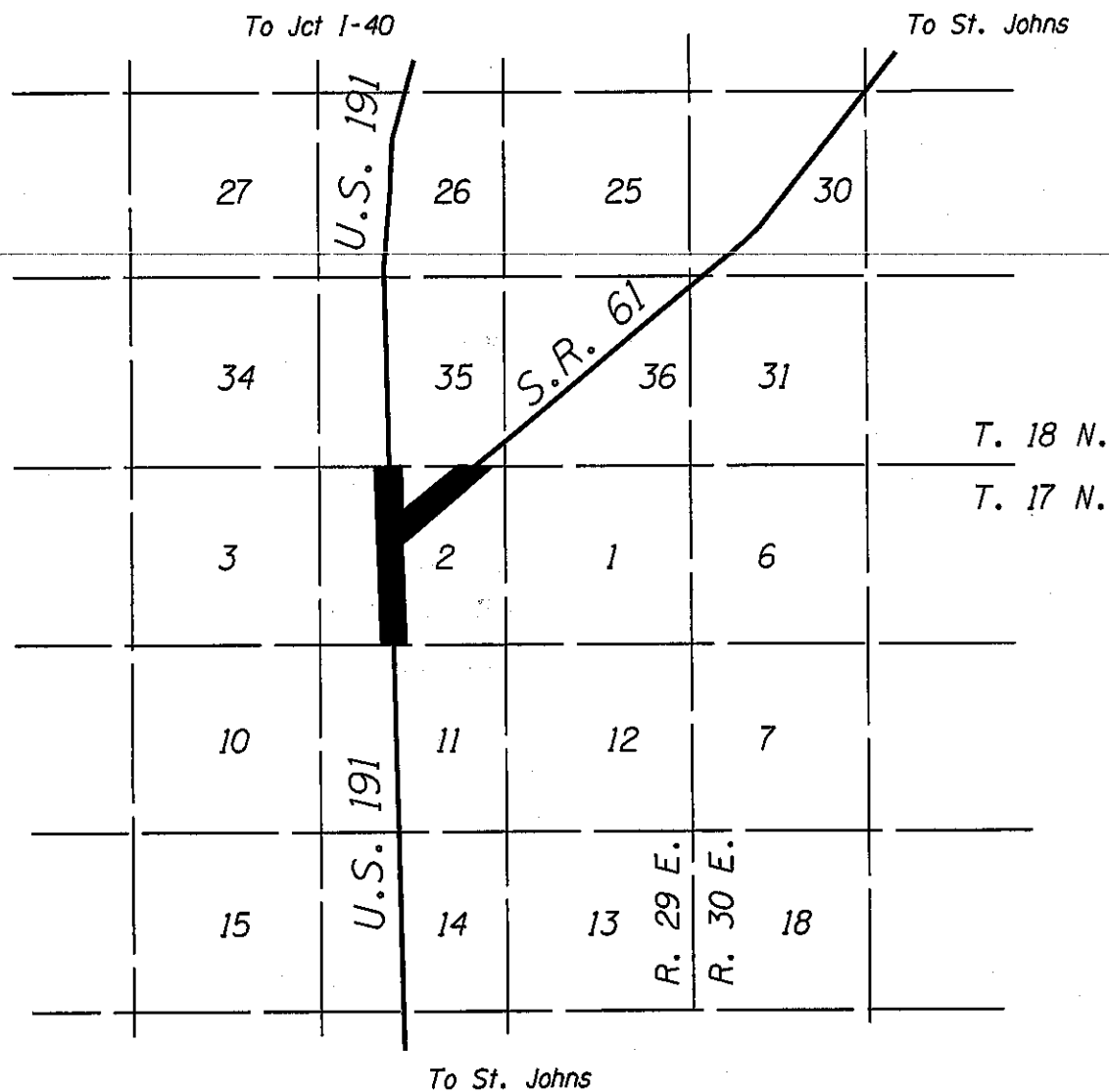
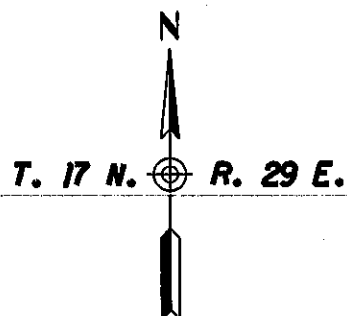
THIS PLAT WAS DIGITALLY PRODUCED
FROM ARIZONA DEPARTMENT OF
TRANSPORTATION
GENERAL HIGHWAY MAP

RIGHT OF WAY PLANS SECTION
REVISED MAY 17, 2000

APPENDIX "A"

061 AP 416 H6095 OIR / S 061-B-800
WITCH WELL - ZUNI
Witch Well
Apache County

DATE: APRIL 15, 2004 SHEET: 1 OF 2



THIS PLAT WAS DIGITALLY PRODUCED
FROM ARIZONA DEPARTMENT OF
TRANSPORTATION
GENERAL HIGHWAY MAP

RIGHT OF WAY PLANS SECTION
REVISED JULY 17, 2000

AREA OF 
ESTABLISHMENT

APPENDIX "A"

061 AP 416 H6095 01R / S 061-B-800
WITCH WELL - ZUNI
Witch Well
Apache County

DATE: APRIL 15, 2004 SHEET: 2 OF 2