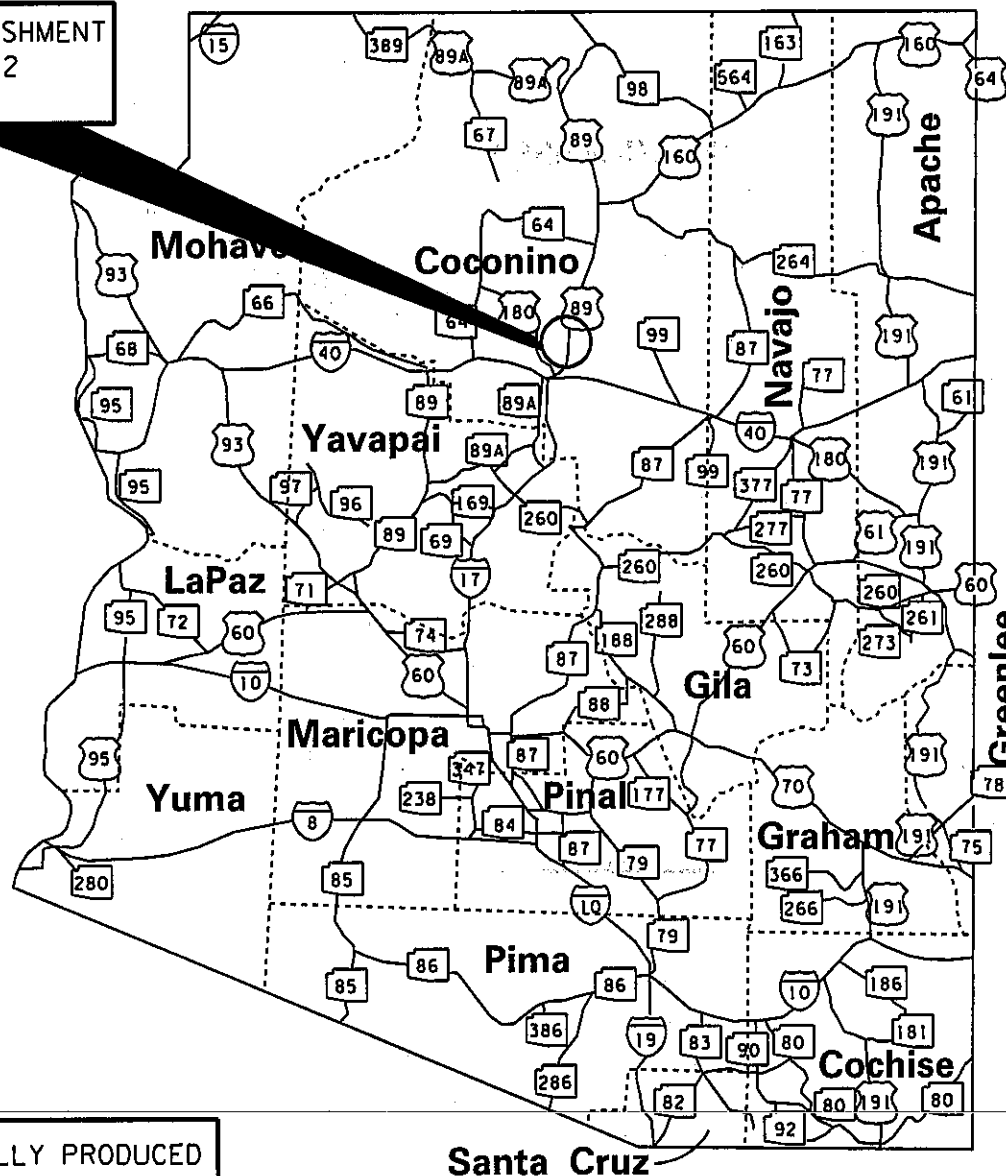


AREA OF ESTABLISHMENT
SEE SHEET 2 OF 2
FOR DETAILS



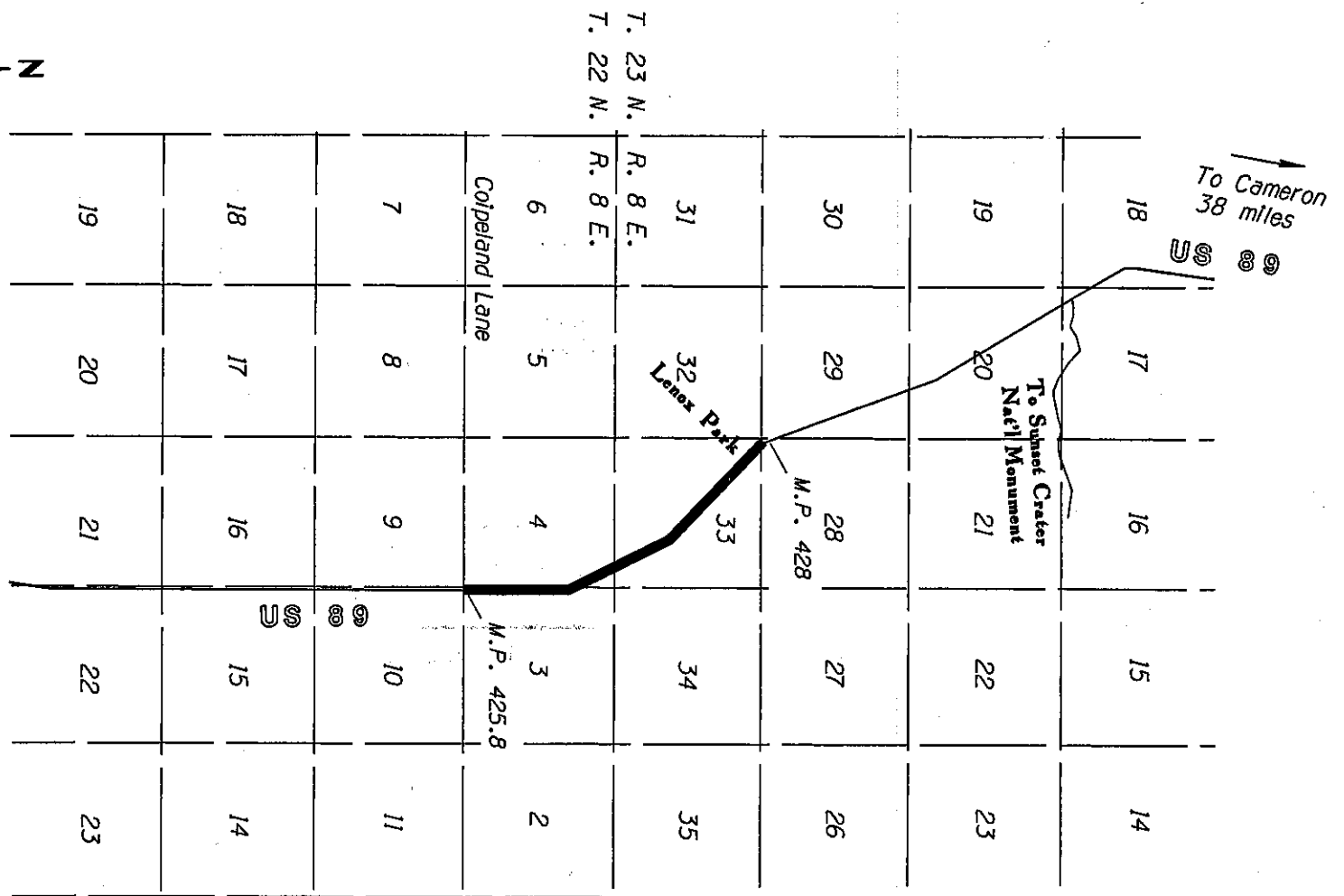
THIS PLAT WAS DIGITALLY PRODUCED
FROM ARIZONA DEPARTMENT OF
TRANSPORTATION
GENERAL HIGHWAY MAP

RIGHT OF WAY PLANS SECTION
REVISED MAY 17, 2000

APPENDIX "A"

089 CN 426 H6531 OIR / U-089-C-700
FLAGSTAFF - CAMERON HWY
Forest Service Boundary. -
Lenox Park Rd.
Coconino County

DATE: FEB 18, 2005 SHEET: 1 OF 2



THIS PLAT WAS DIGITALLY PRODUCED
FROM ARIZONA DEPARTMENT OF
TRANSPORTATION
GENERAL HIGHWAY MAP

RIGHT OF WAY PLANS SECTION
REVISED JULY 17, 2000

AREA OF
ESTABLISHMENT

APPENDIX "A"

089 CN 426 H6531 01R / U-089-C-700
FLAGSTAFF - CAMERON HWY
Forest Service Boundary. -
Lenox Park Rd.
Coconino County

DATE: FEB 18, 2005 SHEET: 2 OF 2