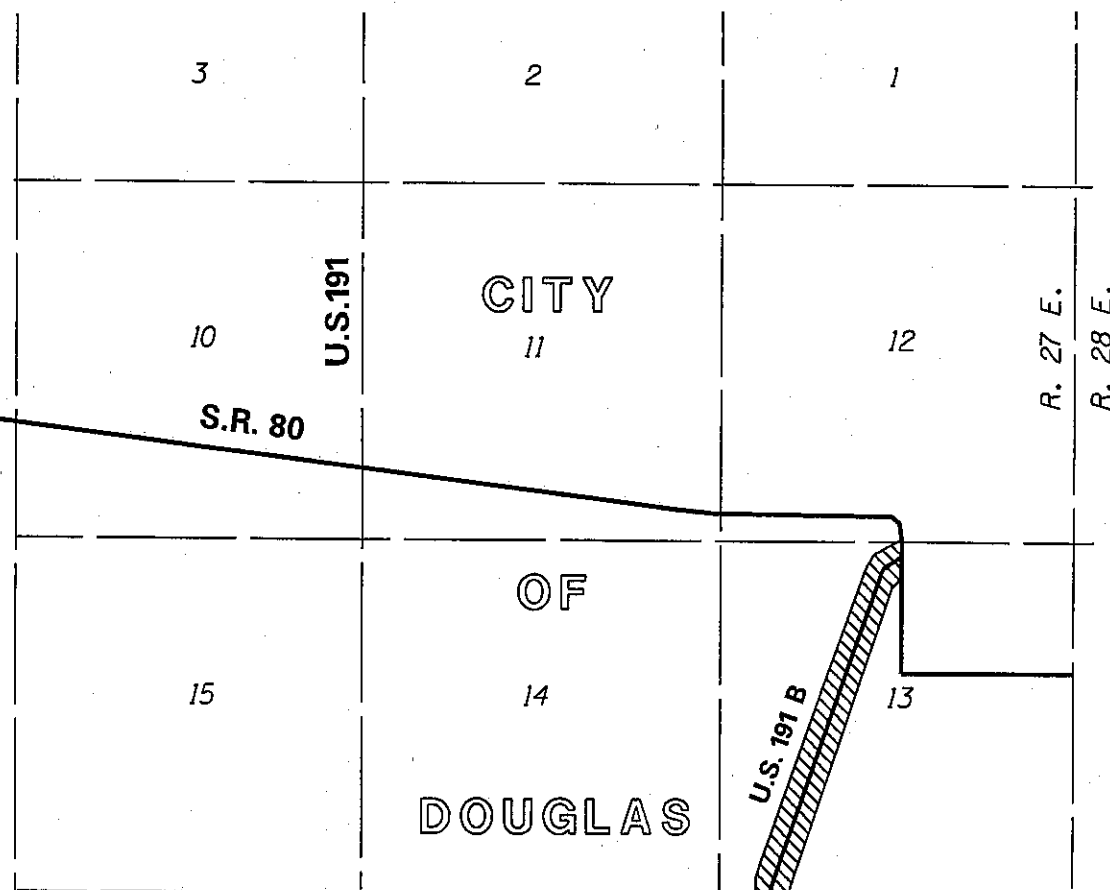


To Bisbee
24 miles



UNITED STATES
MEXICO

AGUA PRIETA

THIS PLAT WAS DIGITALLY PRODUCED
FROM ARIZONA DEPARTMENT OF
TRANSPORTATION
GENERAL HIGHWAY MAP

RIGHT OF WAY PLANS SECTION
REVISED JULY 17, 2000

AREA OF
ESTABLISHMENT



APPENDIX "A"

191 B CH 000 HX157 01R / U 191-N-800
PAN AMERICAN AVENUE
10th Street Intersection
Cochise County

DATE: OCT 15, 2004 SHEET: 2 OF 2