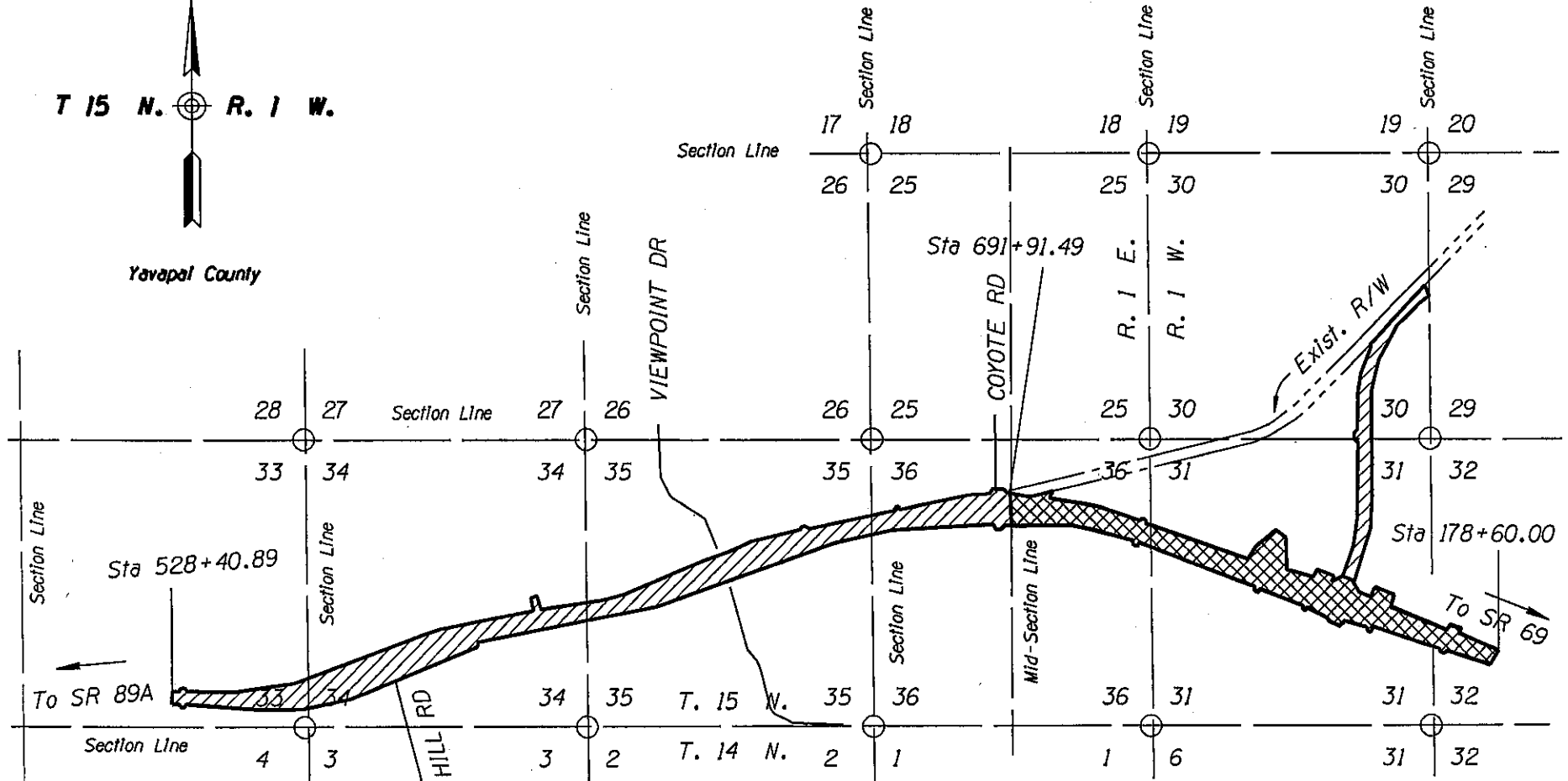


Yavapai County



AREA OF ESTABLISHMENT
SR 89A SPUR 

AREA OF ESTABLISHMENT
SR 89A 

APPENDIX "A"

THIS PLAT WAS DIGITALLY PRODUCED FROM ARIZONA DEPARTMENT OF TRANSPORTATION GENERAL HIGHWAY MAP
RIGHT OF WAY PLANS SECTION
REVISED JULY 17, 2000

089A YV 321 H5208 01R/S-A89-A-701
PRESCOTT - FLAGSTAFF
SR 89A & SR 89A SPUR
Glassford Hill Rd. Section
Yavapai County
DATE: JULY 16, 2004 SHEET 2 OF 2