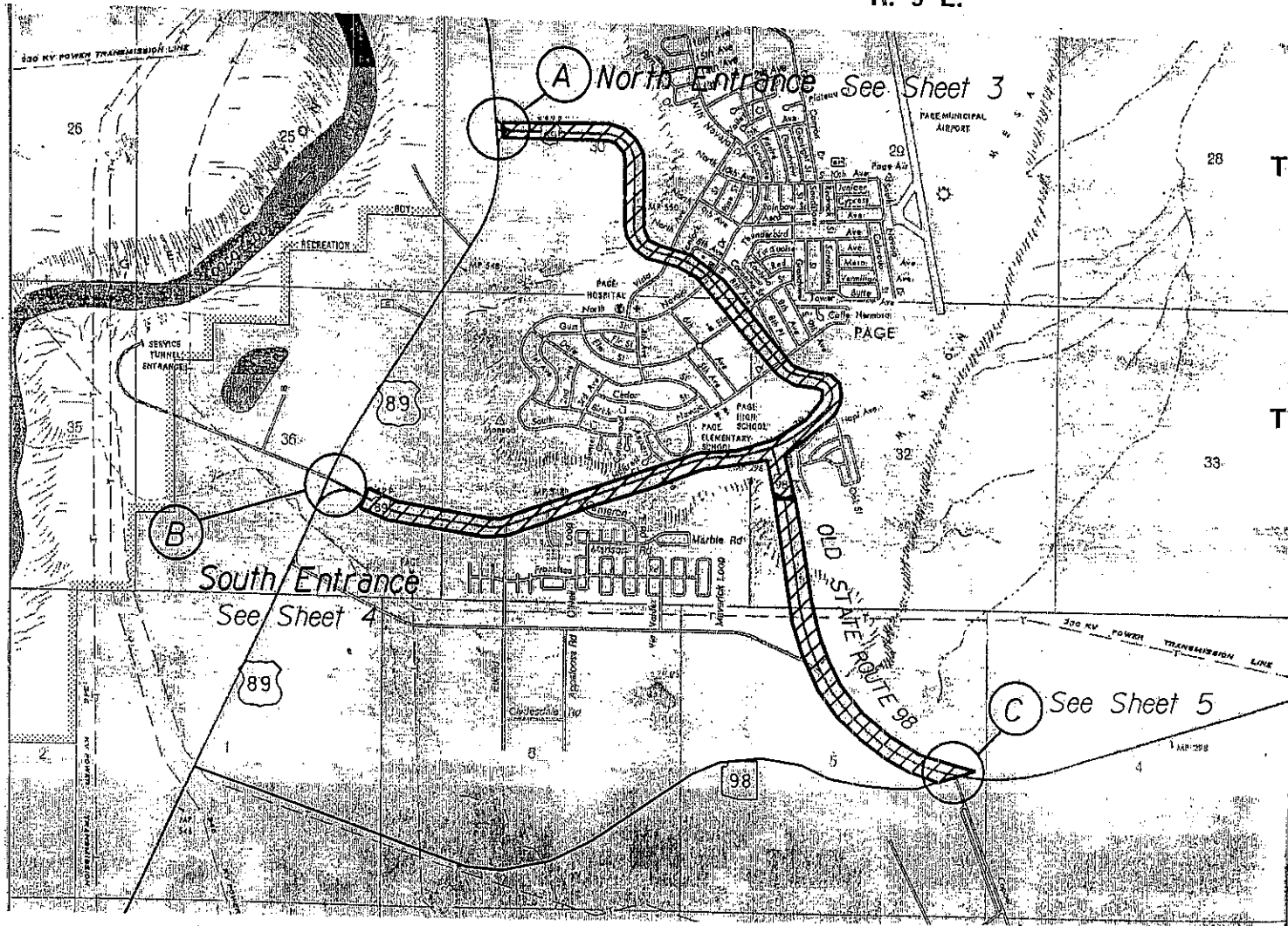


R. 8 E.



R. 9 E.



T. 40 N.

THIS PLAT WAS DIGITALLY PRODUCED
FROM ARIZONA DEPARTMENT OF
TRANSPORTATION
GENERAL HIGHWAY MAP

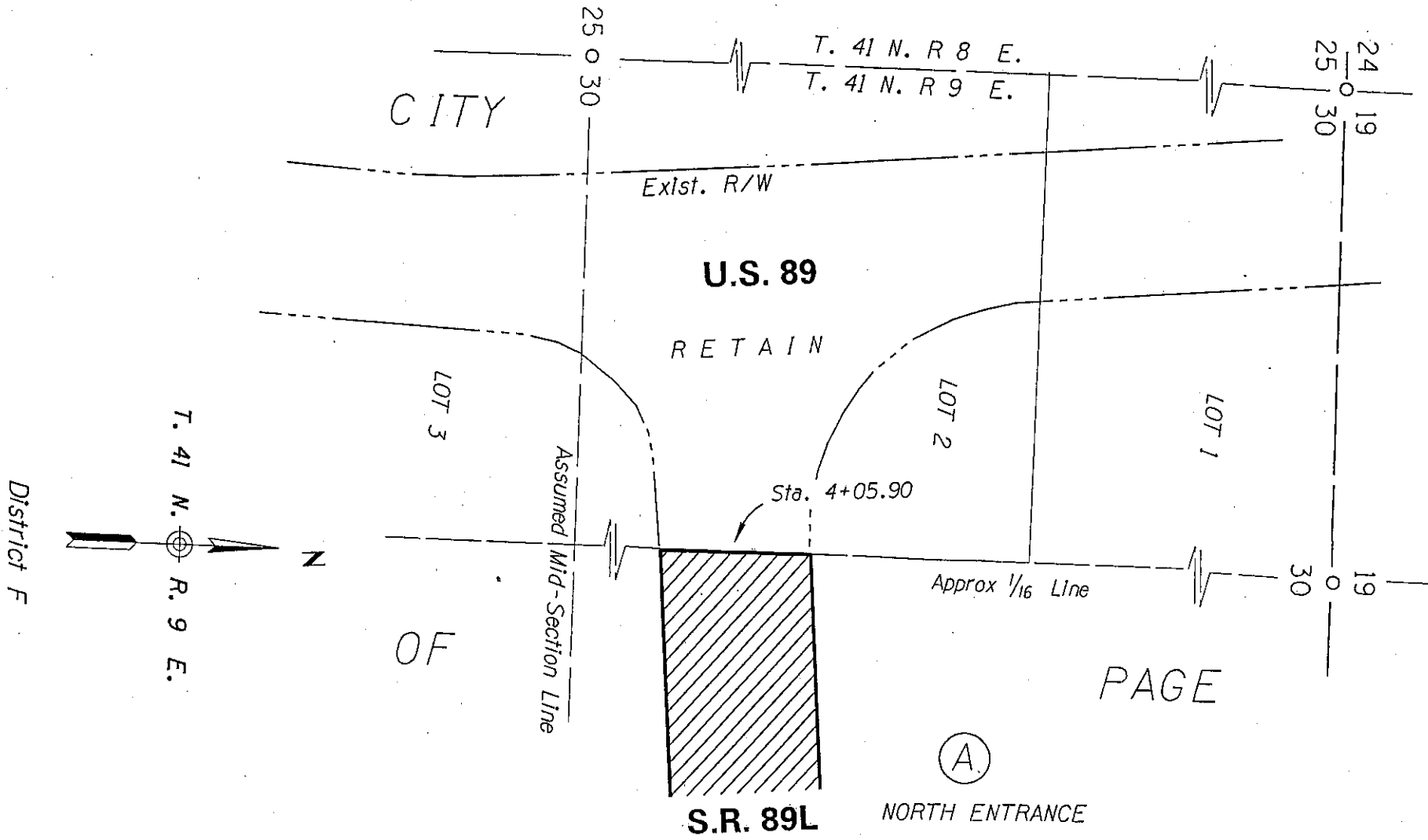
RIGHT OF WAY PLANS SECTION
REVISED JULY 17, 2000

 ABANDONMENT
TO CITY OF PAGE.
 DEFINITIVE CUTOFFS
See Pages 3-5

APPENDIX "A"


089L/098 CN 000 H0888 01R /
S-559-601, F-041-701, M-839-1-701
PAGE LOOP; PAGE-JCT. U.S. 160 SR 89L
Page Streets
Coconino County

DATE: DEC 14, 2001 SHEET: 2 OF 5



THIS PLAT WAS DIGITALLY PRODUCED
 FROM ARIZONA DEPARTMENT OF
 TRANSPORTATION
 GENERAL HIGHWAY MAP

RIGHT OF WAY PLANS SECTION
 REVISED JULY 17, 2000

AREA OF 
 ABANDONMENT

APPENDIX "A"

089L/098 CN 000 H0888 01R /
 S-559-601, F-041-701, M-839-1-701
 PAGE LOOP; PAGE-JCT. U.S. 160 SR 89L
 Page Streets
 Coconino County

DATE: DEC 14, 2001 SHEET: 3 OF 5

CITY

NW⁴SE⁴

To Utah State Line

Exist. R/W

Approx 1/16 Line

NE⁴SE⁴

U.S. 89

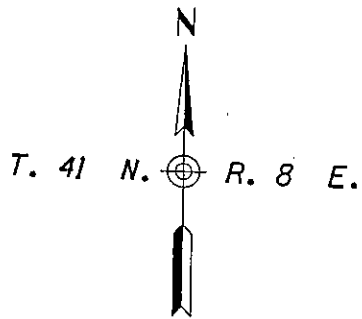
Exist. R/W

S.R. 89L

OF

Approx 1/16 Line

To Bitter Springs



Section 36
District F

(B)

SOUTH ENTRANCE


PAGE

Exist. R/W

THIS PLAT WAS DIGITALLY PRODUCED
FROM ARIZONA DEPARTMENT OF
TRANSPORTATION
GENERAL HIGHWAY MAP

RIGHT OF WAY PLANS SECTION
REVISED JULY 17, 2000

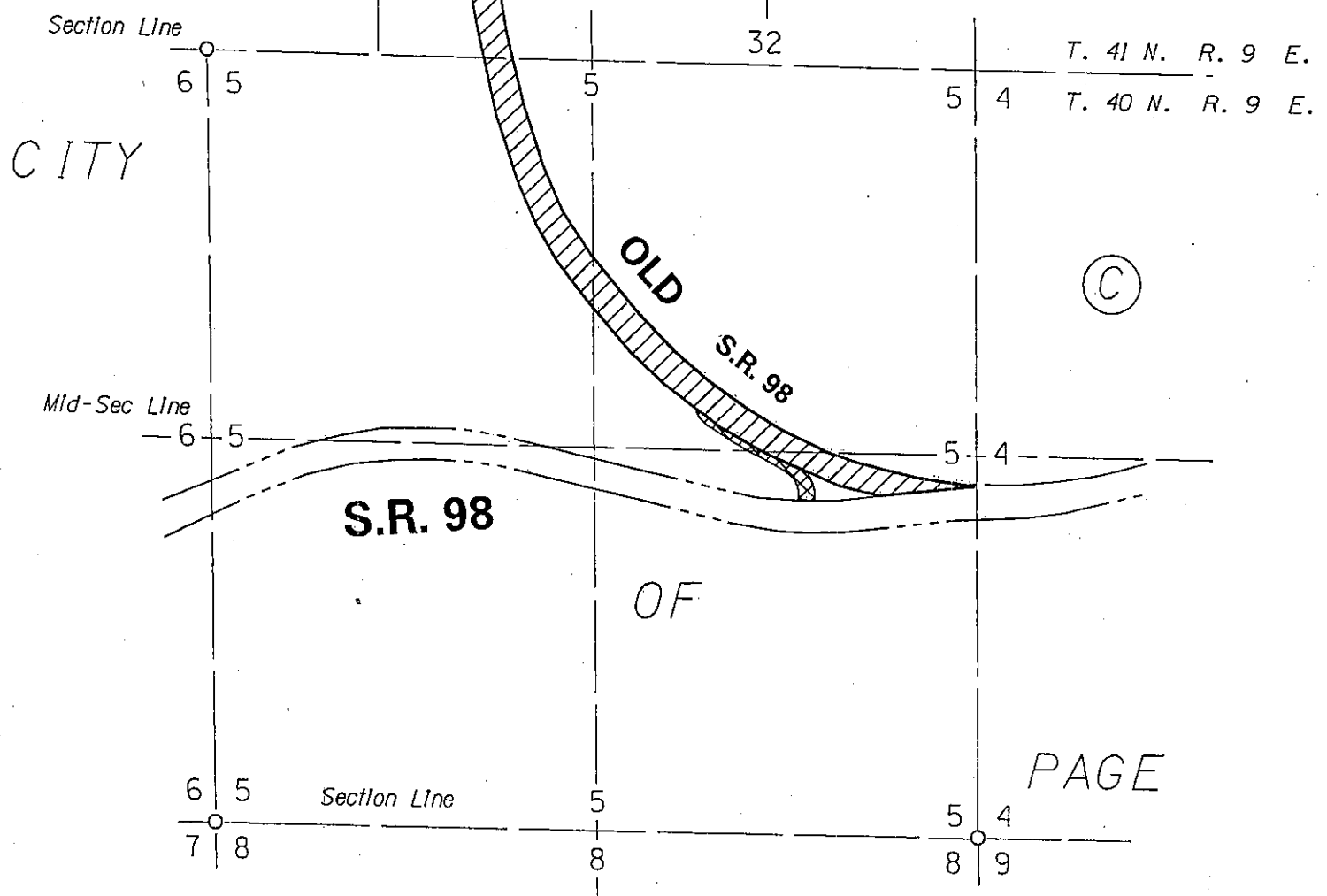
AREA OF
ABANDONMENT



APPENDIX "A"

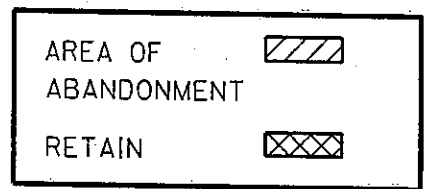
089L/098 CN 000 H0888 01R /
S-559-601, F-041-701, M-839-1-701
PAGE LOOP; PAGE-JCT. U.S. 160 SR 89L
Page Streets
Coconino County

DATE: DEC 14, 2001 SHEET: 4 OF 5



THIS PLAT WAS DIGITALLY PRODUCED
 FROM ARIZONA DEPARTMENT OF
 TRANSPORTATION
 GENERAL HIGHWAY MAP

RIGHT OF WAY PLANS SECTION
 REVISED JULY 17, 2000



APPENDIX "A"

089L/098 CN 000 H0888 01R /
 S-559-601, F-041-701, M-839-1-701
 PAGE LOOP; PAGE-JCT. U.S. 160 SR 89L
 Page Streets
 Coconino County

DATE: DEC 14, 2001 SHEET: 5 OF 5