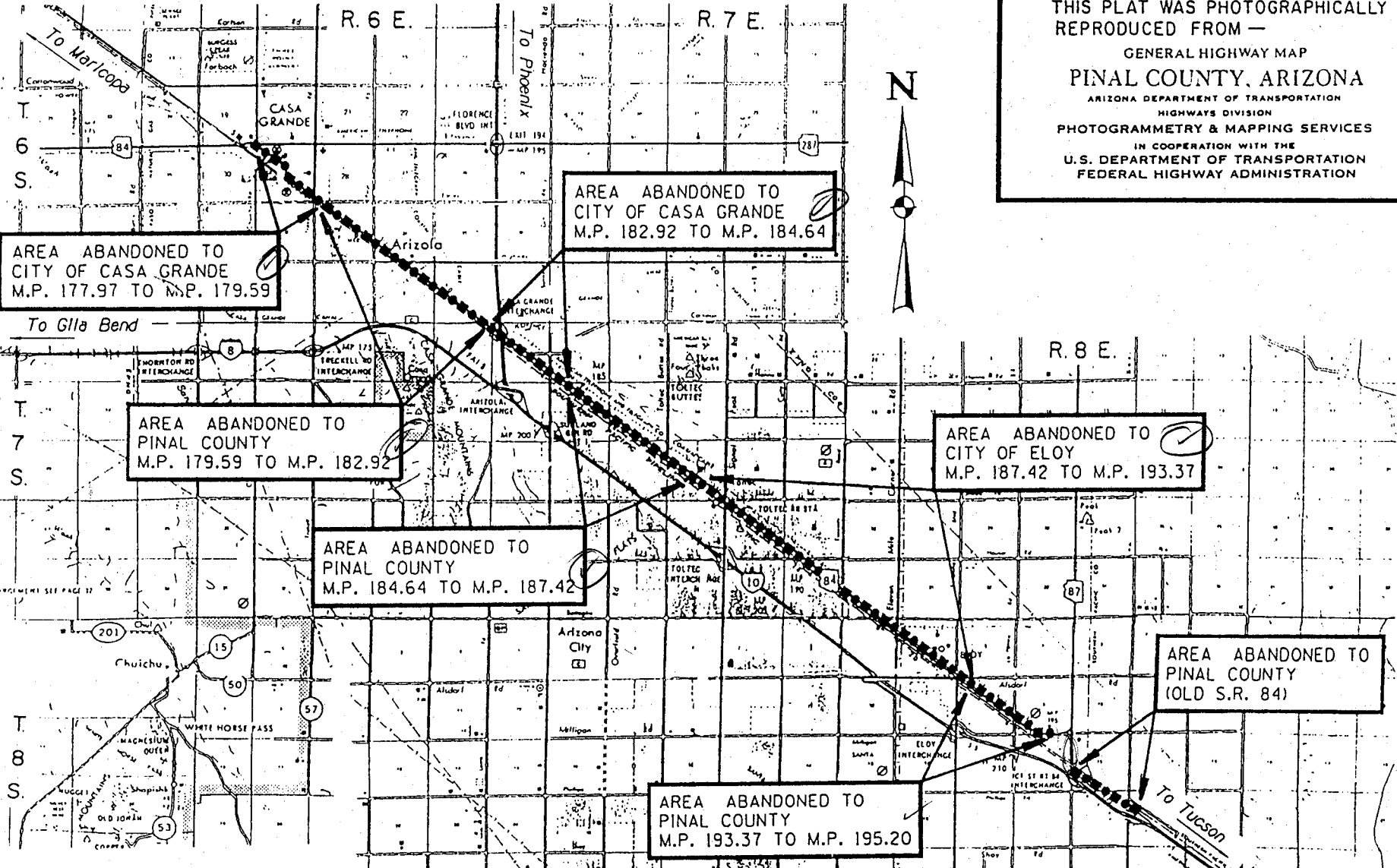


THIS PLAT WAS PHOTOGRAPHICALLY
 REPRODUCED FROM —
 GENERAL HIGHWAY MAP
PINAL COUNTY, ARIZONA
 ARIZONA DEPARTMENT OF TRANSPORTATION
 HIGHWAYS DIVISION
 PHOTOGRAMMETRY & MAPPING SERVICES
 IN COOPERATION WITH THE
 U.S. DEPARTMENT OF TRANSPORTATION
 FEDERAL HIGHWAY ADMINISTRATION



Information on this plat was obtained from R/W Map No.'s: 11-T-307, 314, 320, 321, A-11-T-311, 347, 350, C-11-T-347A, 347C, 351A, 390, 406A, D-11-T-347B, 390; 406, 436, 441, 469.

AREA OF DISPOSAL

APPENDIX "A"

084PN177H088801R/010PN232H088801R
 CASA GRANDE - TUCSON HWY., I-10
 (Casa Grande - Pinal/Pima Co. Line)
 Pinal County
 10-17-97
 Sheet 1 of 2

THIS PLAT WAS PHOTOGRAPHICALLY
REPRODUCED FROM —

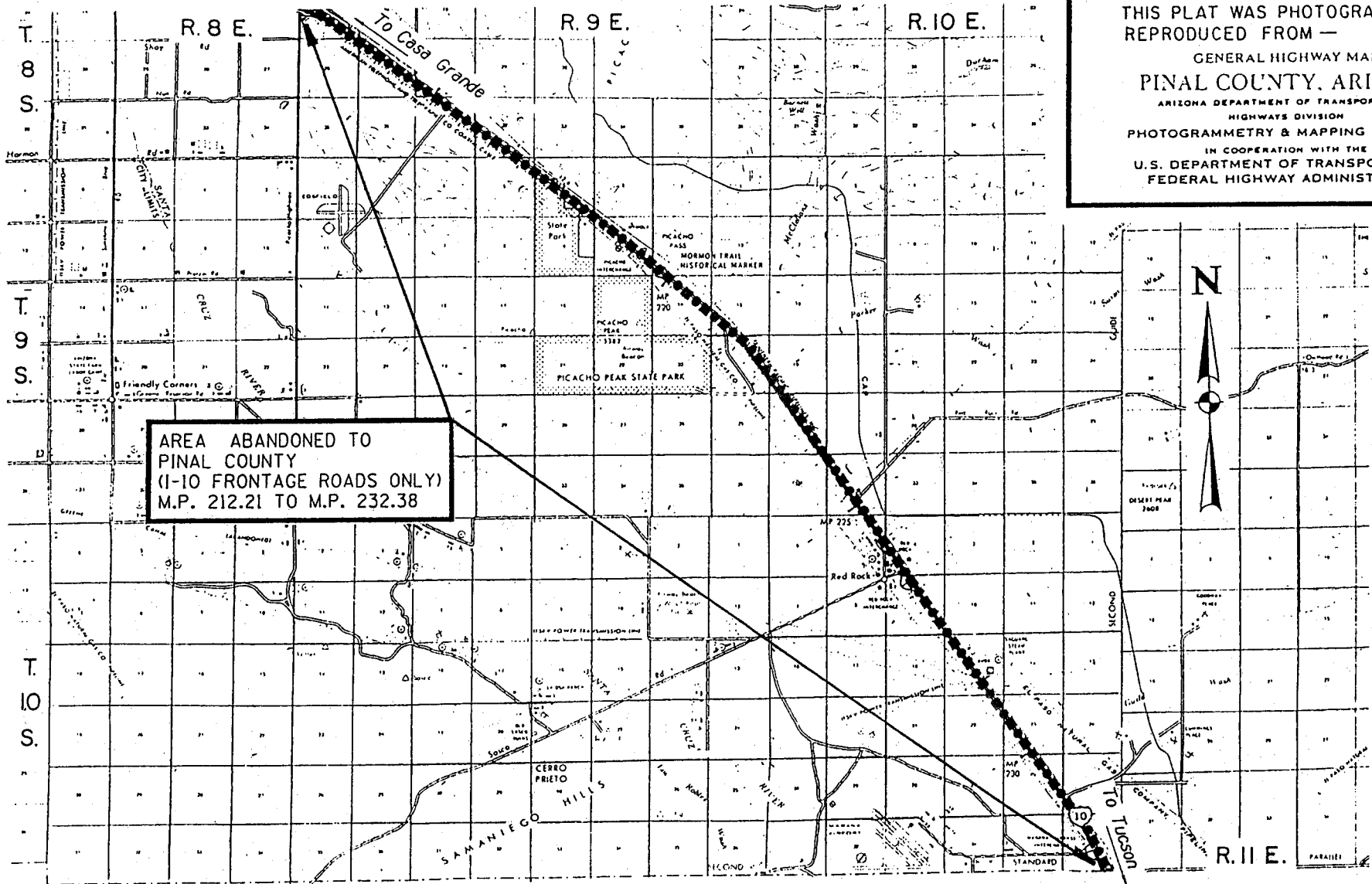
GENERAL HIGHWAY MAP

PINAL COUNTY, ARIZONA

ARIZONA DEPARTMENT OF TRANSPORTATION
HIGHWAYS DIVISION

PHOTOGRAMMETRY & MAPPING SERVICES

IN COOPERATION WITH THE
U.S. DEPARTMENT OF TRANSPORTATION
FEDERAL HIGHWAY ADMINISTRATION



AREA ABANDONED TO
PINAL COUNTY
(I-10 FRONTAGE ROADS ONLY)
M.P. 212.21 TO M.P. 232.38

Information on this plat was
obtained from R/W Map No.'s:
11-T-133, 301, A-11-T-308, 339,
340, 351, C-11-T-341, 345,
D-11-T-343, 355, & 364.

AREA OF DISPOSAL

APPENDIX "A"

084PNI77H088801R/010PN232H088801R
CASA GRANDE - TUCSON HWY., I-10
(Casa Grande - Pinal/Pima Co. Line)
Pinal County
10-17-97
Sheet 2 of 2