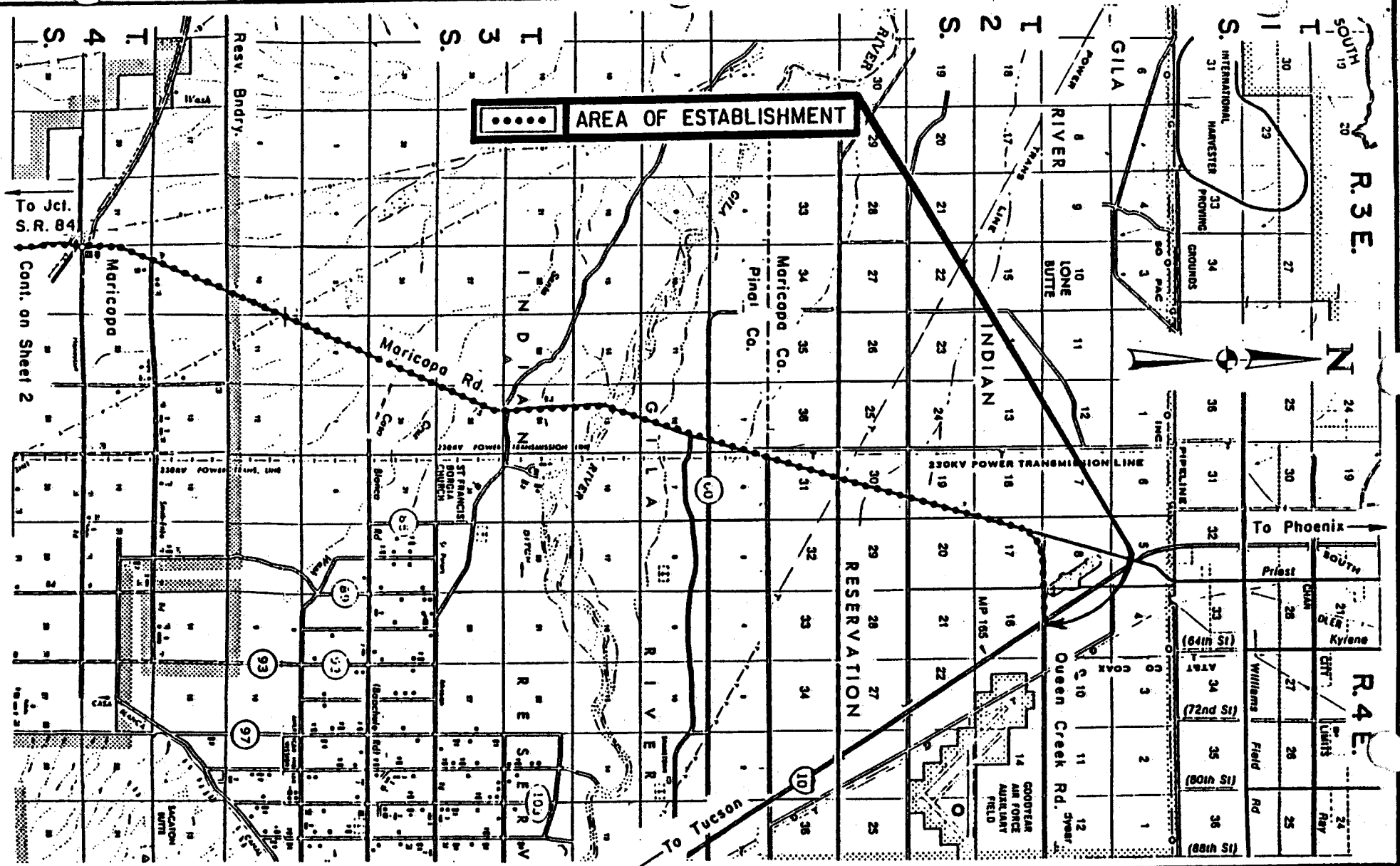


7/15/74/094



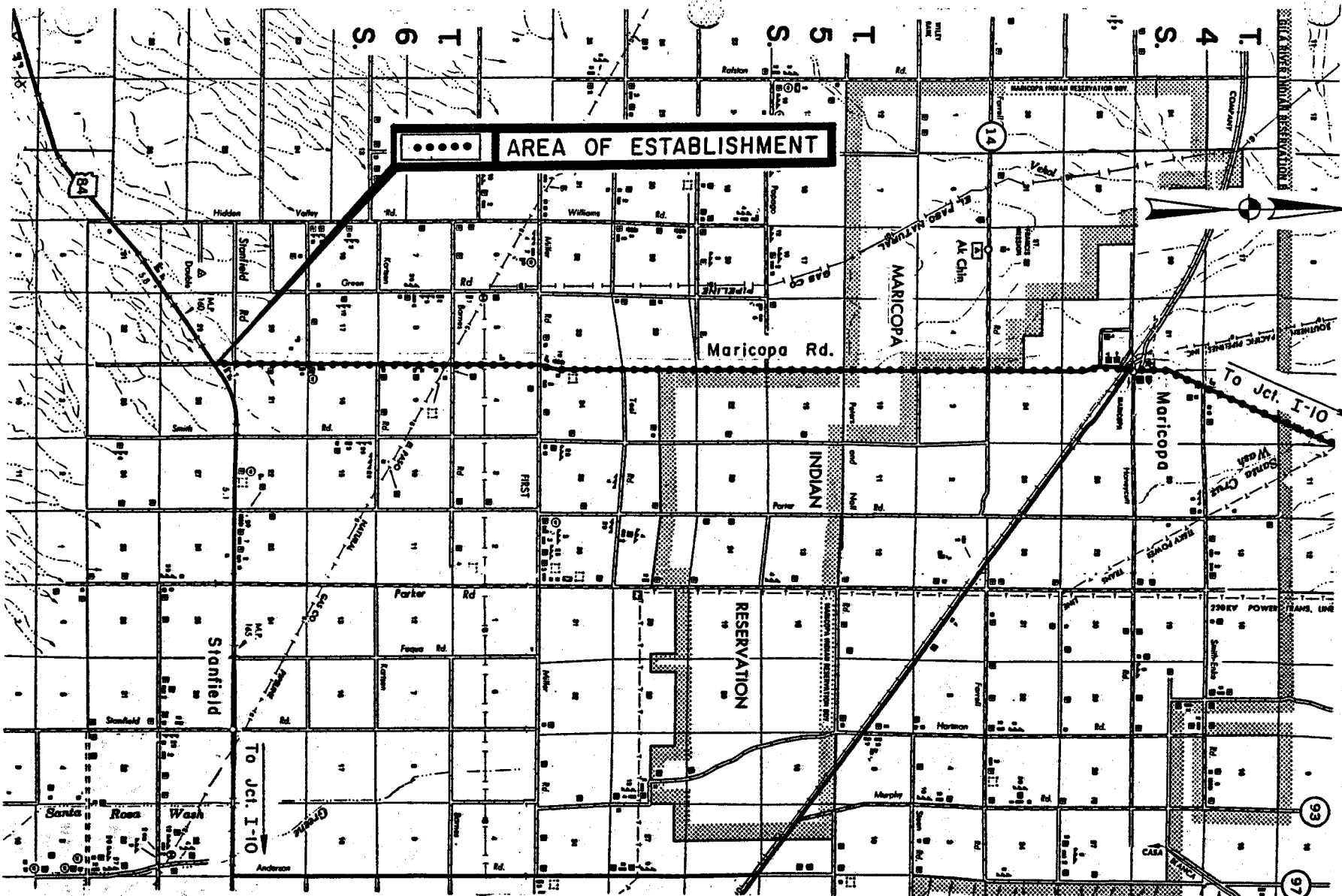
AREA OF ESTABLISHMENT

Information on this plat
 was obtained from R/W
 Map # D-11-T-461 &
 Map # D-11-T-464

APPENDIX "A"

347 PN 000 H277801R/RS-347(10)
 347 PN 002 H277802R/RS-347(10)
 MARICOPA ROAD, S.R. 347
 Maricopa - I - 10
 Jct. S.R. 84 - Maricopa
 Maricopa & Pinal Counties
 5-16-97 Sheet 1 of 2

9711371994



R. 3 E.

Cont. from Sheet 1

Information on this plat
 was obtained from R/W
 Map # D-11-T-461 &
 Map # D-11-T-464

APPENDIX "A"

347 PN 000 H277801R/RS-347(10)
 347 PN 002 H277802R/RS-347(10)
 MARICOPA ROAD, S.R. 347
 Maricopa - I - 10
 Jct. S.R. 84 - Maricopa
 Maricopa & Pinal Counties
 5-16-97 Sheet 2 of 2