

ARIZONA DEPARTMENT OF TRANSPORTATION
205 SOUTH 17TH AVENUE
R/W Operations, MD 612E
PHOENIX, AZ 85007-3213

September 15, 2011

RES. NO. 2011-09-A-062
PROJECT: RAM 202-D-800 / 202LMA000H543901R
HIGHWAY: SOUTH MOUNTAIN FREEWAY
SECTION: Jct. I-10 West - Jct. I-10 South
ROUTE NO.: State Route 202 Loop
ENG. DIST.: Phoenix
COUNTY: Maricopa
PARCEL NO: 7-11538

RESOLUTION OF ESTABLISHMENT

JOHN S. HALIKOWSKI, Director, Arizona Department of Transportation, on September 15, 2011, presented and filed with this Transportation Board his written report recommending the establishment, approval and adoption of a portion of the State Route Plan through the advance acquisition of right of way within the above referenced project.

The area of establishment, the location of the State Route Plan and the land to be acquired by advance acquisition are depicted in Appendix "A" and delineated on the Advance Acquisition Parcel Plats for Parcel No. 7-11538 on file in the office of the State Engineer, Intermodal Transportation Division, Phoenix, Arizona.

WHEREAS it has been determined that a reasonable need exists for the above referenced parcel and that advance acquisition would forestall development and result in substantial savings to the State; and

WHEREAS that portion of the State Route 202 Loop as depicted in Appendix "A" should be established as a state route and adopted and approved as part of the State Route Plan for the improvements; and

WHEREAS because of these premises, this Board finds public safety, necessity, and convenience require the recommended establishment, approval and adoption of the portion of the State Route Plan, and advance acquisition of the land needed for State Route 202 Loop future improvements; therefore, be it

September 15, 2011

RES. NO. 2011-09-A-062
PROJECT: RAM 202-D-800 / 202LMA000H543901R
HIGHWAY: SOUTH MOUNTAIN FREEWAY
SECTION: Jct. I-10 West - Jct. I-10 South
ROUTE NO.: State Route 202 Loop
ENG. DIST.: Phoenix
COUNTY: Maricopa
PARCEL NO: 7-11538

RESOLVED that the portion of the State Route 202 Loop as depicted in Appendix "A" is hereby established as a state route; be it further

RESOLVED that the State Route Plan as depicted in Appendix "A" is hereby approved and adopted; be it further

RESOLVED that the Director is authorized to proceed with advance acquisition to acquire an estate in fee and/or easement and the appropriate rights of access needed for the parcel of land depicted in Appendix "A", in accordance with Arizona Revised Statutes Section 28-7094; be it further

RESOLVED that the Director secure an appraisal of the land to be acquired, and that necessary parties be compensated. Upon failure to acquire said lands by other lawful means, the Director is authorized to initiate condemnation proceedings.

RESOLVED that the recommendation of the Director is adopted and made a part of this resolution; be it further

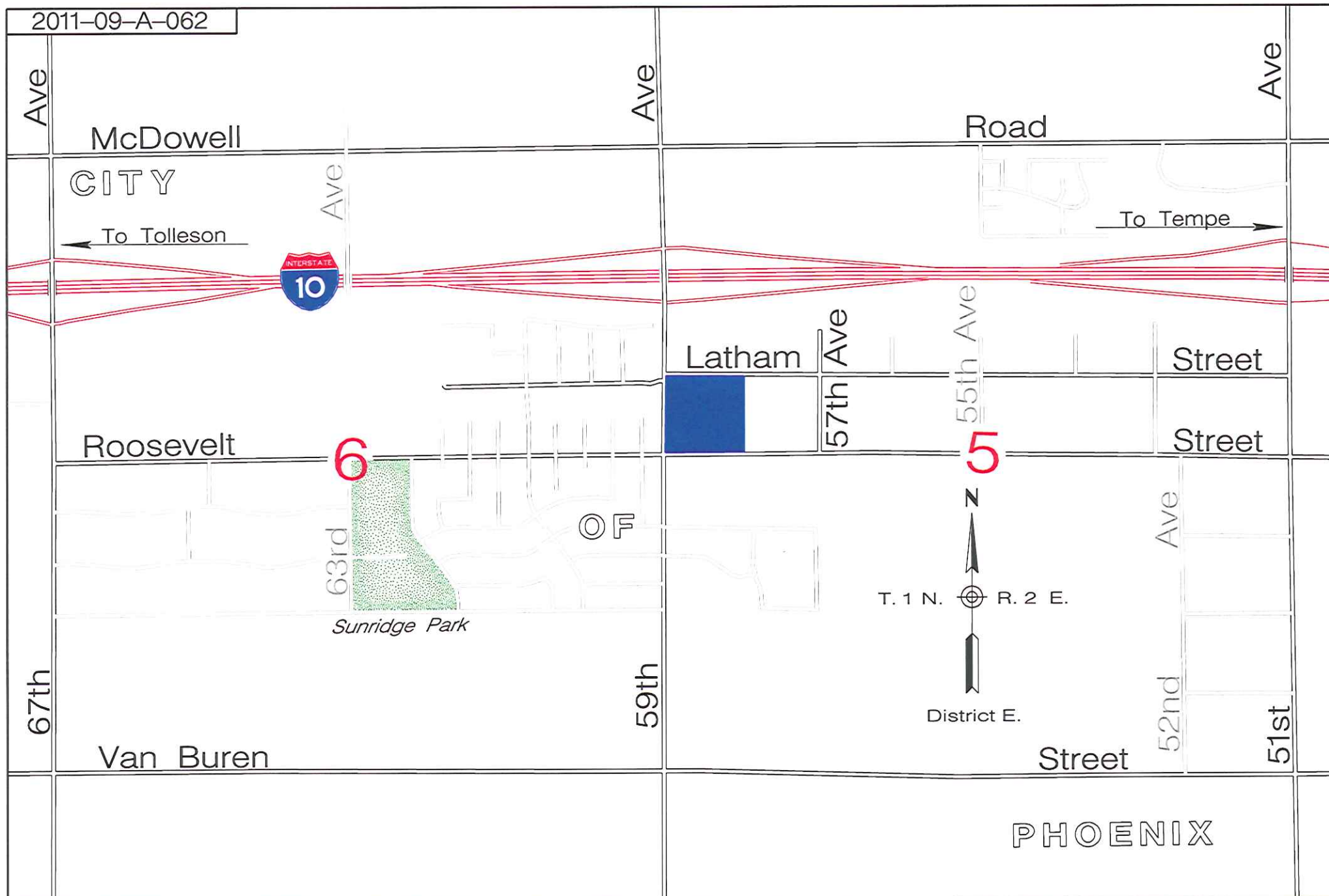


1" = 36960'

A LEGIBLE COPY CAN BE OBTAINED FROM THE ARIZONA
DEPARTMENT OF TRANSPORTATION STATE ENGINEER'S
OFFICE RIGHT OF WAY GROUP
205 SOUTH 17TH AVENUE
PHOENIX, ARIZONA 85007 MAIL DROP 612E

APPENDIX "A"

202L MA 000 H5439 01R
RAM 202-D-800
SOUTH MOUNTAIN FREEWAY
Jct. I-10 West - Jct. I-10 South
Maricopa County
Sept 15, 2011 SHEET 1 OF 2



A LEGIBLE COPY CAN BE OBTAINED FROM THE ARIZONA
DEPARTMENT OF TRANSPORTATION STATE ENGINEER'S
OFFICE RIGHT OF WAY GROUP
205 SOUTH 17TH AVENUE
PHOENIX, ARIZONA 85007 MAIL DROP 612E

AREA OF 
ESTABLISHMENT

APPENDIX "A"

202L MA 000 H5439 01R
RAM 202-D-800
SOUTH MOUNTAIN FREEWAY
Jct. I-10 West - Jct. I-10 South
Maricopa County
Sept 15, 2011 SHEET 2 OF 2

September 15, 2011

RES. NO. 2011-09-A-062
PROJECT: RAM 202-D-800 / 202LMA000H543901R
HIGHWAY: SOUTH MOUNTAIN FREEWAY
SECTION: Jct. I-10 West - Jct. I-10 South
ROUTE NO.: State Route 202 Loop
ENG. DIST.: Phoenix
COUNTY: Maricopa
PARCEL NO: 7-11538

REPORT AND RECOMMENDATION

TO THE HONORABLE ARIZONA TRANSPORTATION BOARD:

The Intermodal Transportation Division has made a thorough investigation concerning the establishment, approval and adoption of a portion of the State Route Plan through the advance acquisition of right of way within the above referenced project.

The property owner of Parcel No. 7-11538, Inland Kenworth, has requested advance acquisition to forestall development. Pursuant to Arizona Revised Statutes Section 28-7094, it has been determined that a reasonable need exists for this land. It has also been determined that advance acquisition will result in a substantial savings to the State which will allow for an orderly acquisition and relocation assistance program.

The area of establishment, the location of the State Route Plan, and the land to be acquired by advance acquisition are depicted in Appendix "A", and delineated on the Advance Acquisition Parcel Plats for Parcel No. 7-11538 on file in the office of the State Engineer, Intermodal Transportation Division, Phoenix, Arizona.

Accordingly, I recommend that the parcel of land depicted in Appendix "A" be established as a state route and designated State Route 202 Loop.

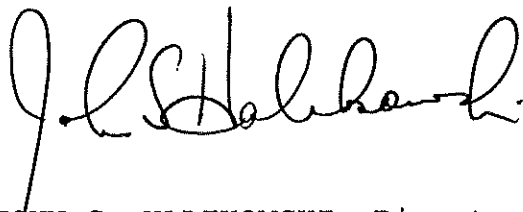
September 15, 2011

RES. NO. 2011-09-A-062
PROJECT: RAM 202-D-800 / 202LMA000H543901R
HIGHWAY: SOUTH MOUNTAIN FREEWAY
SECTION: Jct. I-10 West - Jct. I-10 South
ROUTE NO.: State Route 202 Loop
ENG. DIST.: Phoenix
COUNTY: Maricopa
PARCEL NO: 7-11538

I further recommend the parcel of land depicted in Appendix "A" be approved and adopted as a portion of the State Route Plan for the State Route 202 Loop and that advance acquisition of the parcel be authorized.

In the interest of public safety, necessity, and convenience, and pursuant to Arizona Revised Statutes Section 28-7046, I recommend the adoption of a resolution making this recommendation effective.

Respectfully submitted,

A handwritten signature in black ink, appearing to read "J. S. Halikowski". The signature is fluid and cursive, with a long horizontal stroke at the end.

JOHN S. HALIKOWSKI, Director
Arizona Department of Transportation

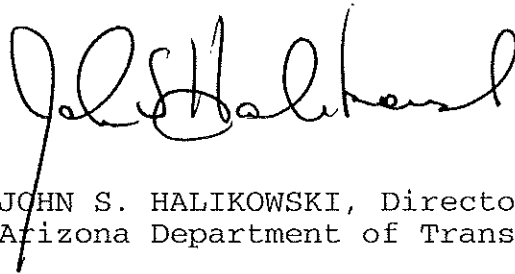
September 15, 2011

RES. NO. 2011-09-A-062
PROJECT: RAM 202-D-800 / 202LMA000H543901R
HIGHWAY: SOUTH MOUNTAIN FREEWAY
SECTION: Jct. I-10 West - Jct. I-10 South
ROUTE NO.: State Route 202 Loop
ENG. DIST.: Phoenix
COUNTY: Maricopa
PARCEL NO: 7-11538

CERTIFICATION

I, JOHN S. HALIKOWSKI, Director of the Arizona Department of Transportation, do hereby certify that the foregoing is a true and correct copy from the minutes of the Transportation Board made in official session on September 15, 2011.

IN WITNESS WHEREOF, I have hereunto set my hand and the official seal of the Transportation Board on September 15, 2011.

A handwritten signature in black ink, appearing to read "John S. Halikowski", is written over a horizontal line.

JOHN S. HALIKOWSKI, Director
Arizona Department of Transportation