

ARIZONA DEPARTMENT OF TRANSPORTATION  
205 SOUTH 17TH AVENUE  
R/W Operations, MD 612E  
PHOENIX, AZ 85007-3213

May 16, 2008

RES. NO. 2008-05-A-020  
PROJECT: N-900-A-800 / 195YU000H577401R  
HIGHWAY: YUMA AREA SERVICE HIGHWAY  
SECTION: Yuma Area Service Highway  
ROUTE NO.: S.R. 195  
ENG. DIST.: YUMA  
COUNTY: YUMA

RESOLUTION OF ESTABLISHMENT

VICTOR M. MENDEZ, Director, Arizona Department of Transportation, on May 16, 2008 presented and filed with this Transportation Board his written report under Arizona Revised Statutes Section 28-7046, recommending the establishment and acquisition of additional right of way for the improvement of a portion of State Route 195 as set forth in the above referenced project.

The additional right of way to be established and acquired for this improvement is depicted in Appendix "A" and delineated on maps and plans on file in the office of the State Engineer, Intermodal Transportation Division, Phoenix, Arizona, entitled "Right of Way Plans, YUMA AREA SERVICE Highway, Project N-900-A-800 / 195YU000H577401R."

WHEREAS establishment and acquisition of the additional right of way is necessary for this improvement; and

WHEREAS because of these premises, this Board finds public safety, necessity and convenience require the recommended establishment and acquisition of the additional land needed for this improvement and that access to the highway shall be controlled as delineated on the maps and plans; therefore, be it

RESOLVED that the recommendation of the Director is adopted and made part of this resolution; be it further

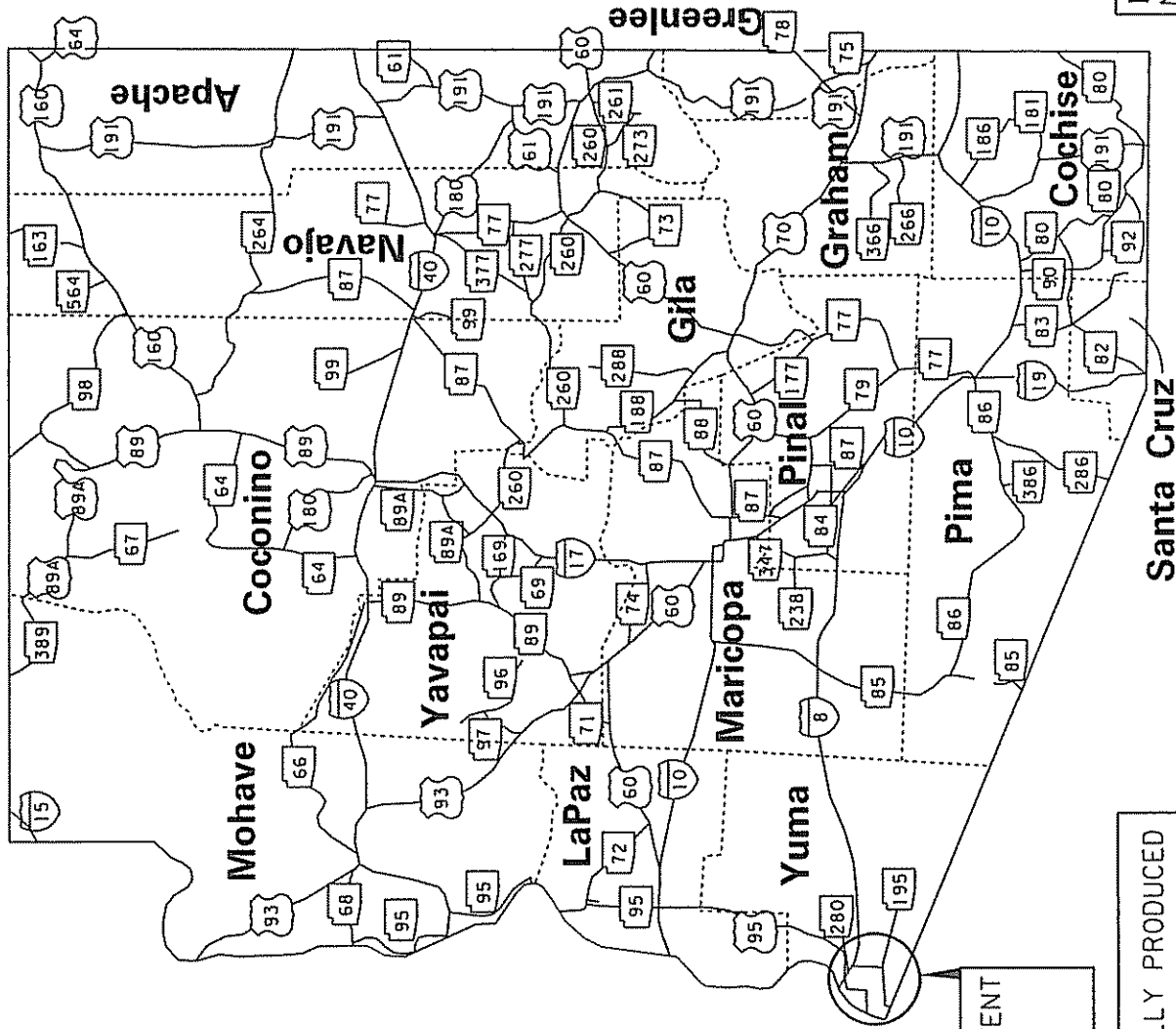
May 16, 2008

RES. NO. 2008-05-A-020  
PROJECT: N-900-A-800 / 195YU000H577401R  
HIGHWAY: YUMA AREA SERVICE HIGHWAY  
SECTION: Yuma Area Service Highway  
ROUTE NO.: S.R. 195  
ENG. DIST.: YUMA  
COUNTY: YUMA

RESOLVED that the portion of right of way as depicted in Appendix "A" is hereby designated a controlled access state highway, and ingress and egress to and from the highway and to and from abutting, adjacent, or other lands be denied, controlled, or regulated as indicated by the maps and plans. Where no access is shown, none will be allowed to exist, be it further

RESOLVED that the Director is hereby authorized to acquire by lawful means, including exchanges, in accordance with Arizona Revised Statutes Section 28-7092, an estate in fee, or such other interest as is required, including material for construction, haul roads, and various easements in any property necessary for or incidental to the improvements as delineated on said maps and plans; be it further

RESOLVED that the Director secure an appraisal of the property to be acquired and that necessary parties be compensated. Upon failure to acquire said lands by other lawful means, the Director is authorized to initiate condemnation proceedings.



AREA OF ESTABLISHMENT  
SEE SHEET 2 OF 2  
FOR DETAILS

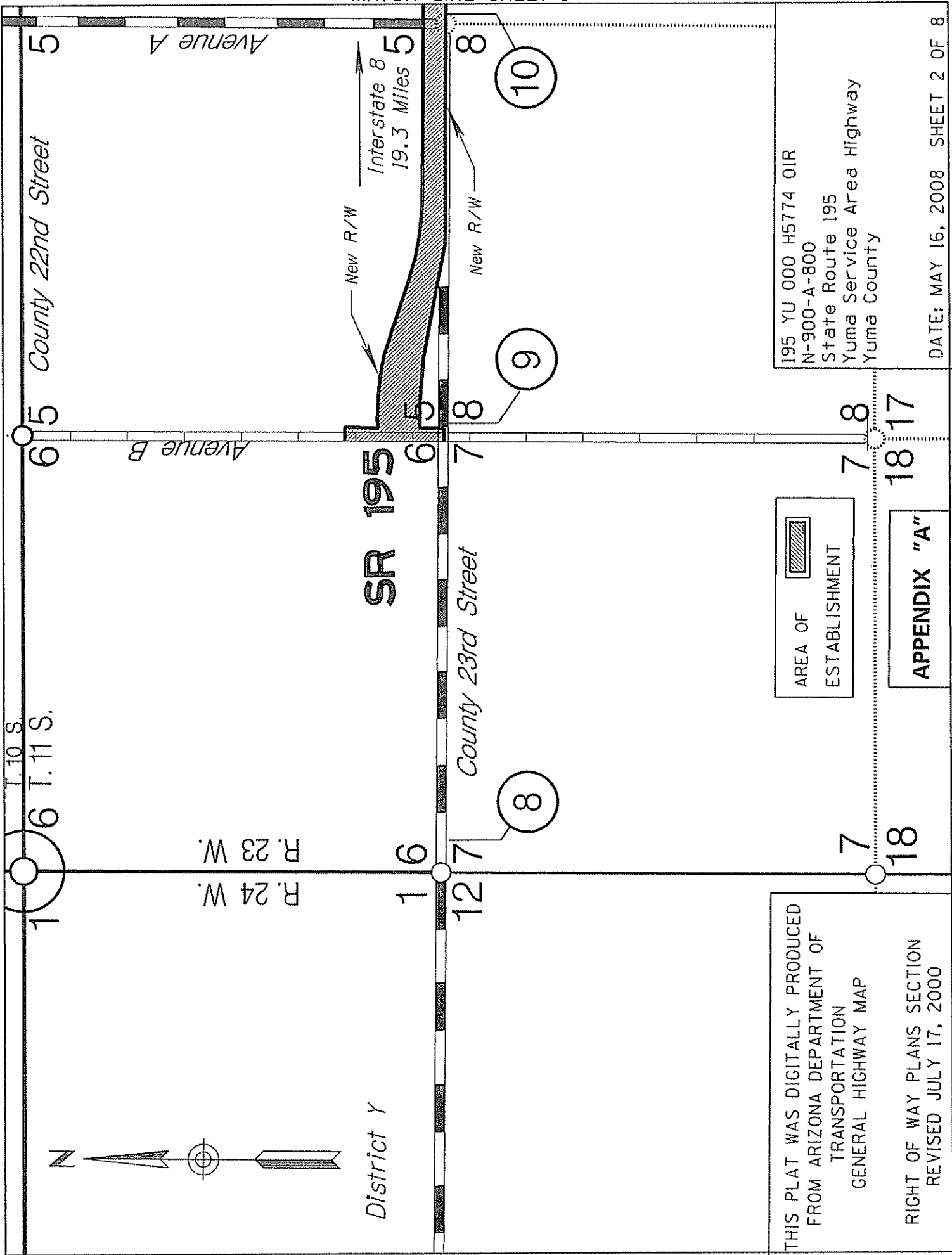
THIS PLAT WAS DIGITALLY PRODUCED  
FROM ARIZONA DEPARTMENT OF  
TRANSPORTATION  
GENERAL HIGHWAY MAP

195 YU 000 H5774 OIR  
N-900-A-800  
State Route 195  
Yuma Service Area Highway  
Yuma County

# APPENDIX "A"

RIGHT OF WAY PLANS SECTION  
REVISED MAY 17, 2000

DATE: MAY 16, 2008 SHEET 1 OF 8



THIS PLAT WAS DIGITALLY PRODUCED  
FROM ARIZONA DEPARTMENT OF  
TRANSPORTATION  
GENERAL HIGHWAY MAP

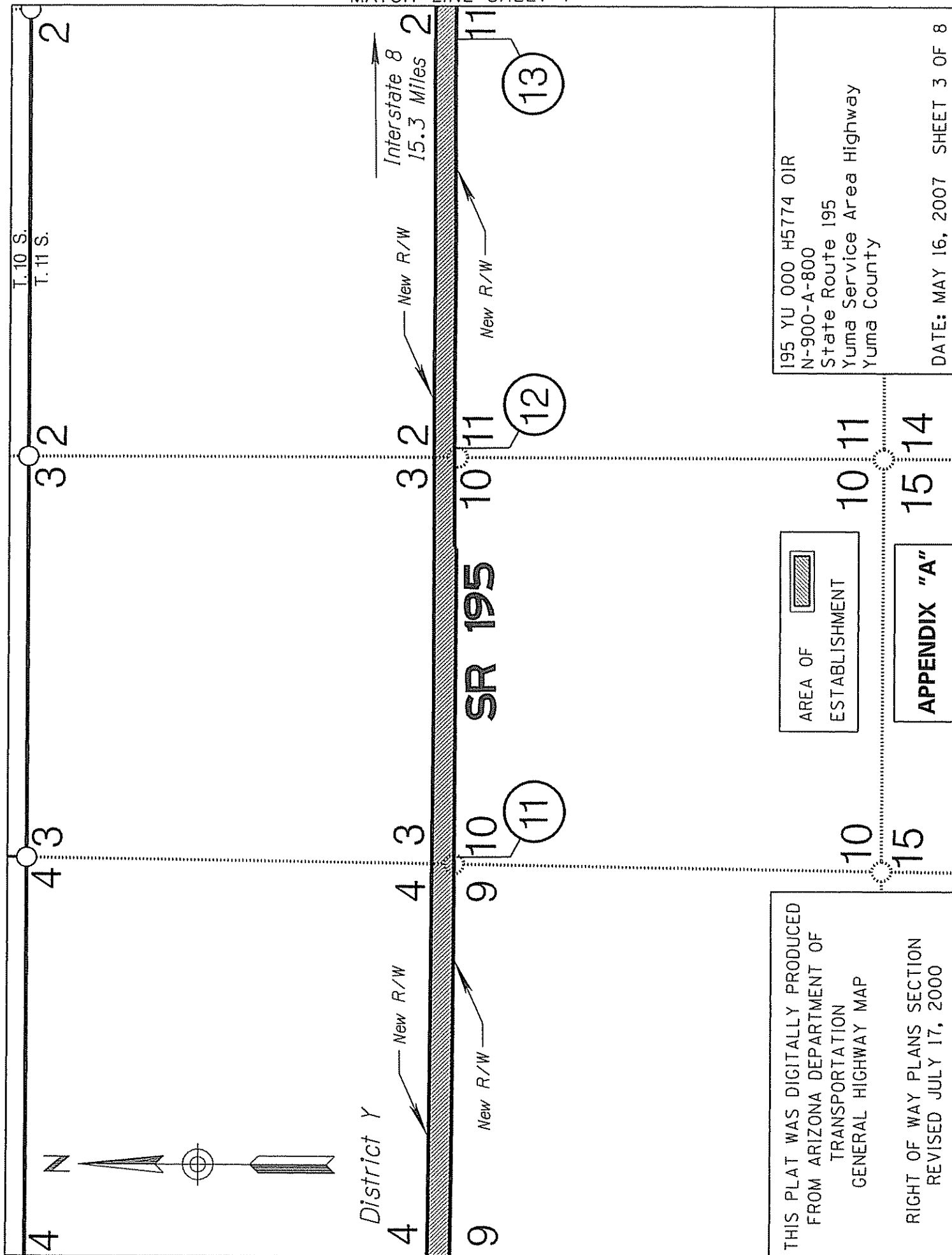
RIGHT OF WAY PLANS SECTION  
REVISED JULY 17, 2000

AREA OF  
ESTABLISHMENT

**APPENDIX "A"**

195 YU 000 H5774 OIR  
N-900-A-800  
State Route 195  
Yuma Service Area Highway  
Yuma County

DATE: MAY 16, 2008 SHEET 2 OF 8



THIS PLAT WAS DIGITALLY PRODUCED  
FROM ARIZONA DEPARTMENT OF  
TRANSPORTATION  
GENERAL HIGHWAY MAP

RIGHT OF WAY PLANS SECTION  
REVISED JULY 17, 2000

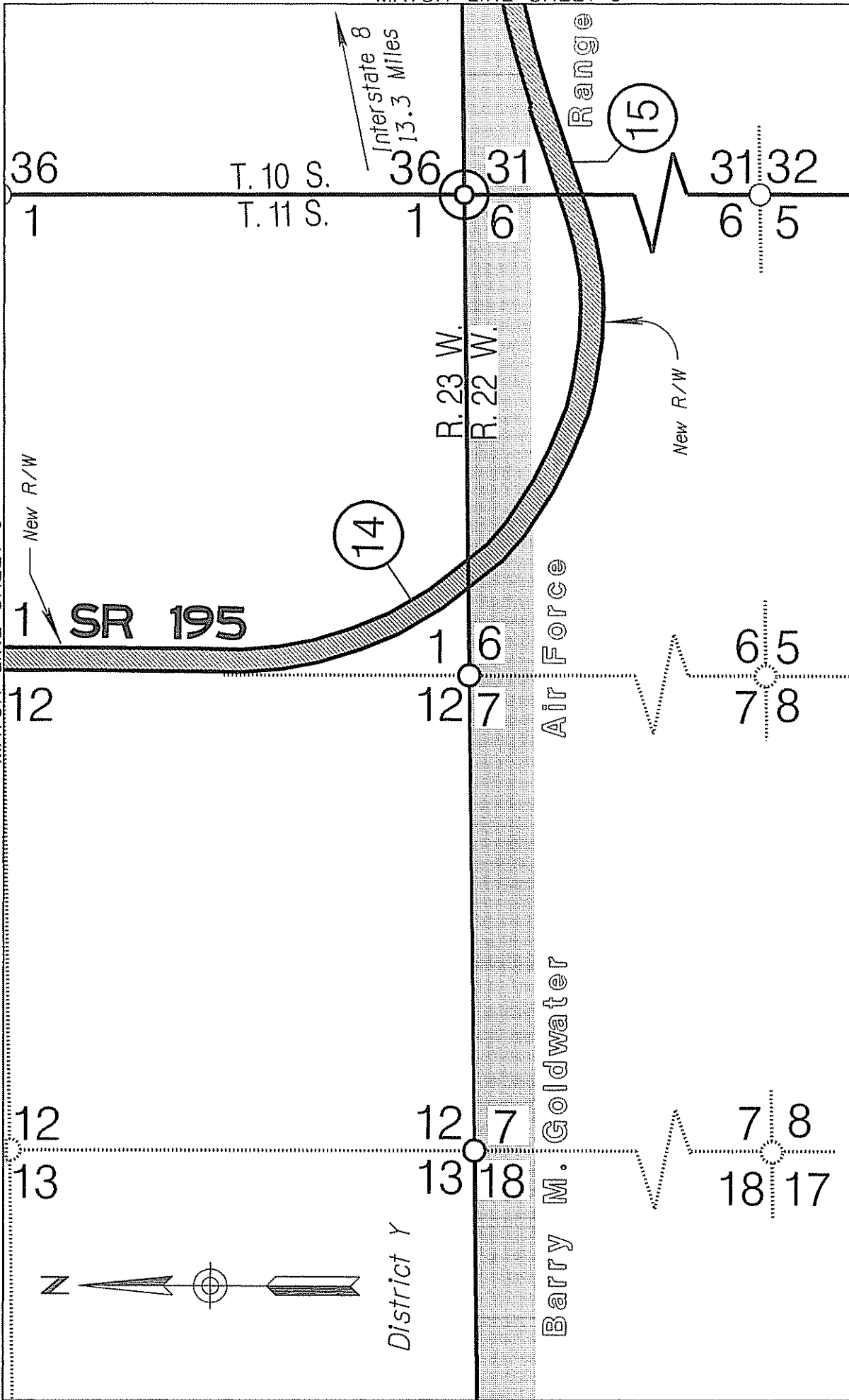
AREA OF  
ESTABLISHMENT

**APPENDIX "A"**

195 YU 000 H5774 OIR  
N-900-A-800  
State Route 195  
Yuma Service Area Highway  
Yuma County

DATE: MAY 16, 2007 SHEET 3 OF 8

MATCH LINE SHEET 3



195 YU 000 H5774 OIR  
N-900-A-800  
State Route 195  
Yuma Service Area Highway  
Yuma County

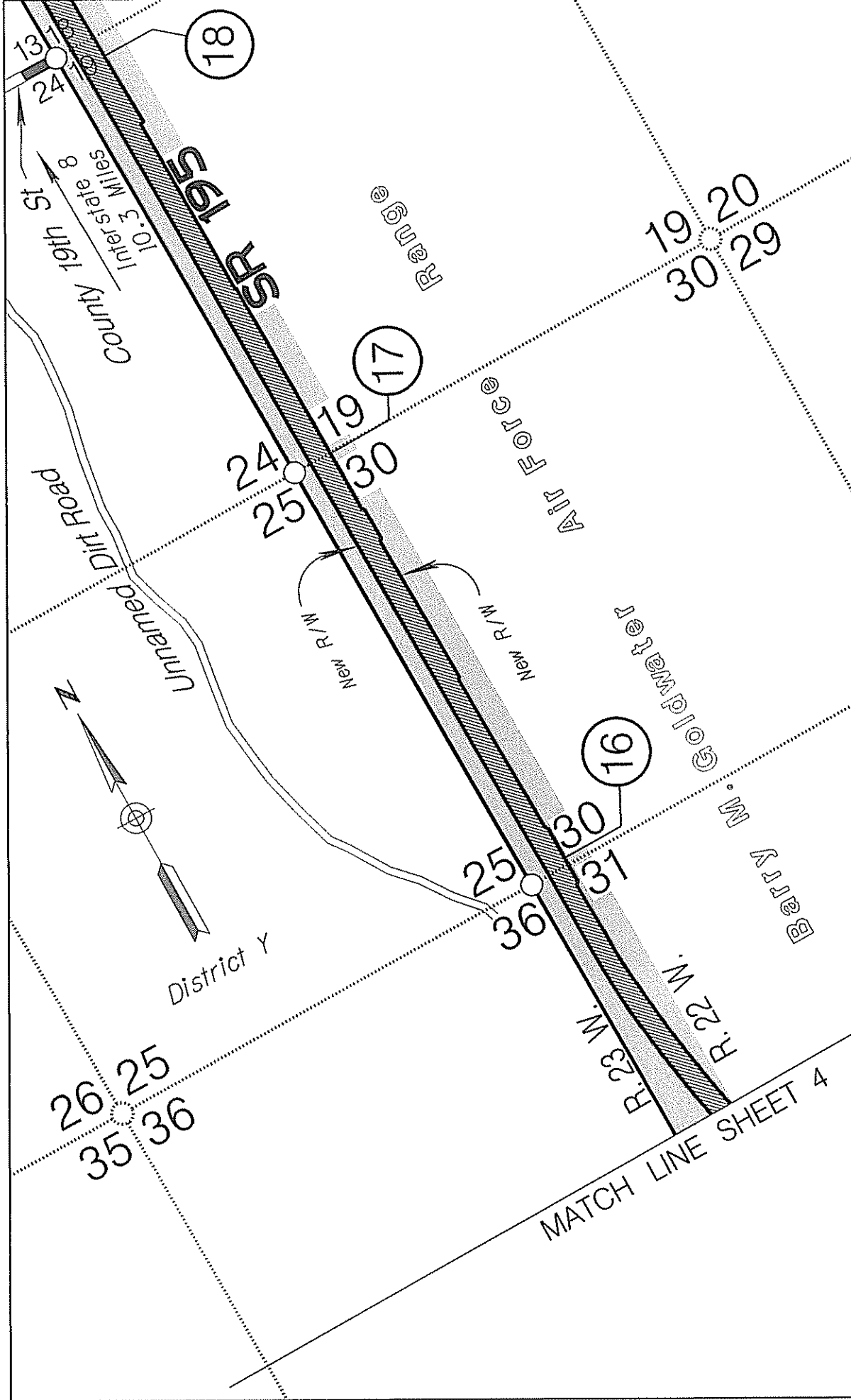
AREA OF  
ESTABLISHMENT

THIS PLAT WAS DIGITALLY PRODUCED  
FROM ARIZONA DEPARTMENT OF  
TRANSPORTATION  
GENERAL HIGHWAY MAP

RIGHT OF WAY PLANS SECTION  
REVISED JULY 17, 2000

APPENDIX "A"

DATE: MAY 16, 2008 SHEET 4 OF 8



195 YU 000 H5774 OIR  
N-900-A-800  
State Route 195  
Yuma Service Area Highway  
Yuma County

DATE: MAY 16, 2008 SHEET 5 OF 8

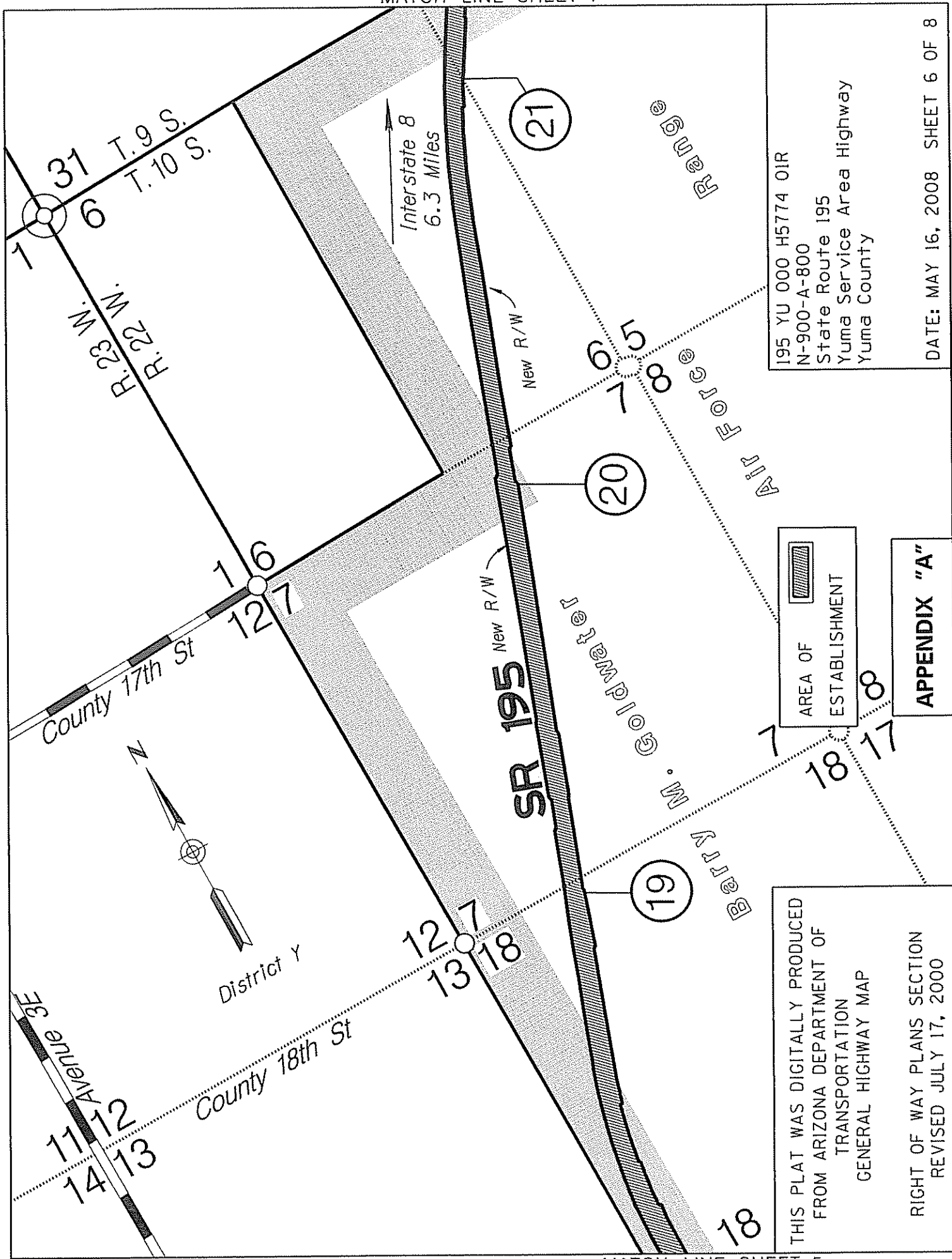
AREA OF  
ESTABLISHMENT

**APPENDIX "A"**

THIS PLAT WAS DIGITALLY PRODUCED  
FROM ARIZONA DEPARTMENT OF  
TRANSPORTATION  
GENERAL HIGHWAY MAP

RIGHT OF WAY PLANS SECTION  
REVISED JULY 17, 2000

MATCH LINE SHEET 4



195 YU 000 H5774 OIR  
N-900-A-800  
State Route 195  
Yuma Service Area Highway  
Yuma County

DATE: MAY 16, 2008 SHEET 6 OF 8

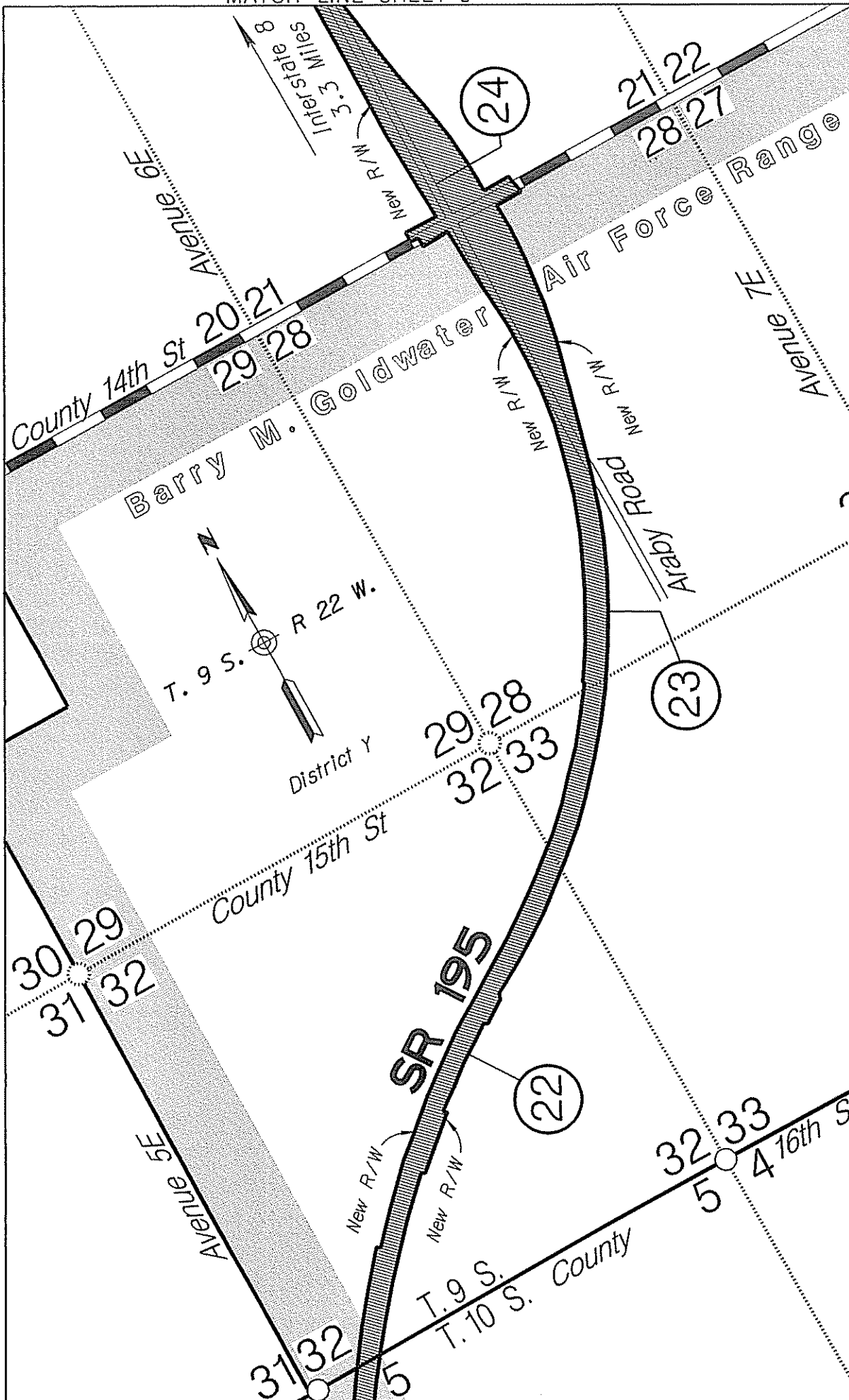
AREA OF  
ESTABLISHMENT

APPENDIX "A"

THIS PLAT WAS DIGITALLY PRODUCED  
FROM ARIZONA DEPARTMENT OF  
TRANSPORTATION  
GENERAL HIGHWAY MAP

RIGHT OF WAY PLANS SECTION  
REVISED JULY 17, 2000





195 YU 000 H5774 OIR  
N-900-A-800  
State Route 195  
Yuma Service Area Highway  
Yuma County

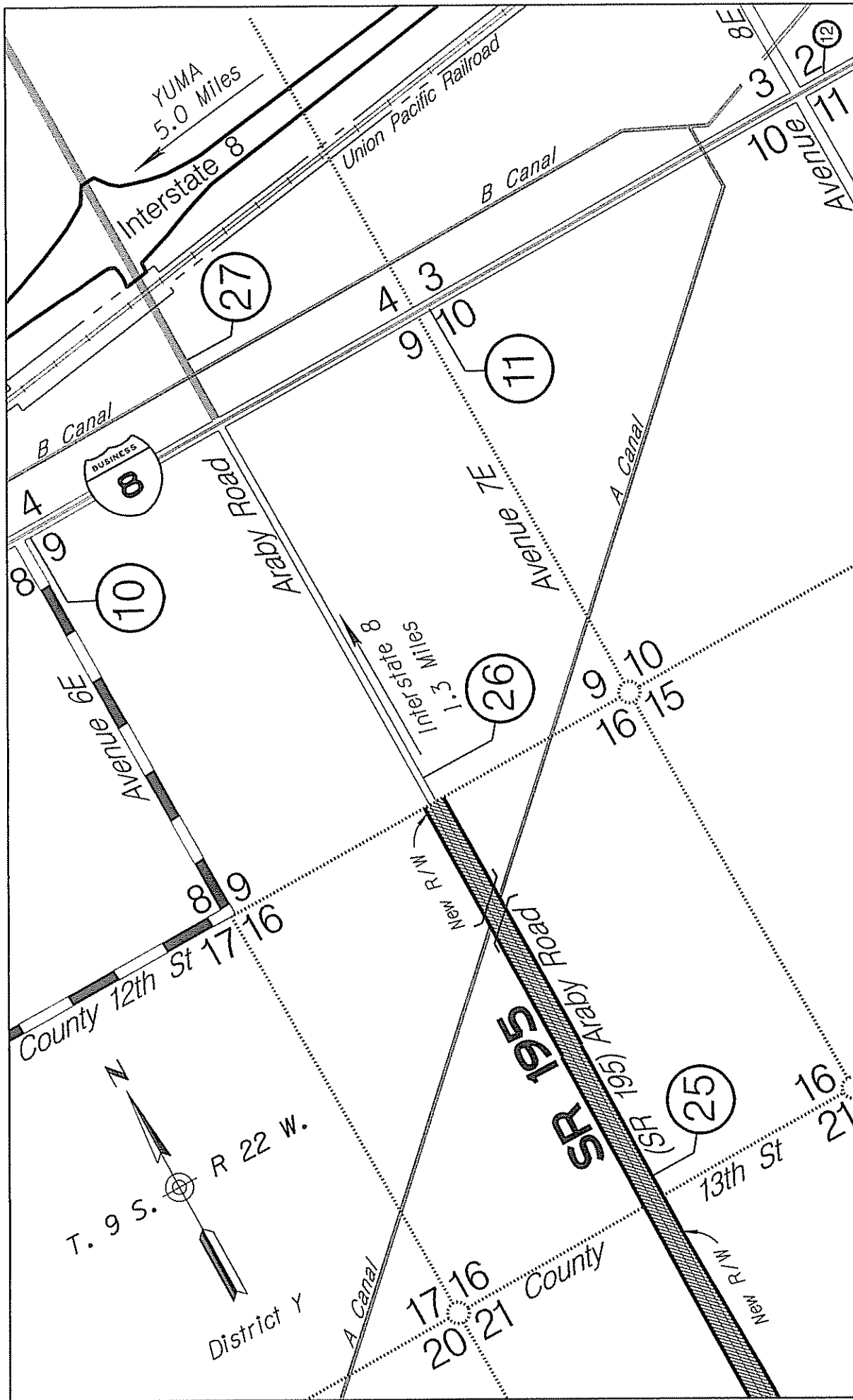
DATE: May 16, 2008 SHEET 7 OF 8

AREA OF  
ESTABLISHMENT

APPENDIX "A"

THIS PLAT WAS DIGITALLY PRODUCED  
FROM ARIZONA DEPARTMENT OF  
TRANSPORTATION  
GENERAL HIGHWAY MAP

RIGHT OF WAY PLANS SECTION  
REVISED JULY 17, 2000



THIS PLAT WAS DIGITALLY PRODUCED  
FROM ARIZONA DEPARTMENT OF  
TRANSPORTATION  
GENERAL HIGHWAY MAP

RIGHT OF WAY PLANS SECTION  
REVISED JULY 17, 2000

195 YU 000 H5774 OIR  
N-900-A-800  
State Route 195  
Yuma Service Area Highway  
Yuma County

DATE: May 16, 2008 SHEET 8 OF 8

AREA OF  
ESTABLISHMENT

**APPENDIX "A"**

May 16, 2008

RES. NO. 2008-05-A-020  
PROJECT: N-900-A-800 / 195YU000H577401R  
HIGHWAY: YUMA AREA SERVICE HIGHWAY  
SECTION: Yuma Area Service, Highway  
ROUTE NO.: S.R. 195  
ENG. DIST.: YUMA  
COUNTY: YUMA

REPORT AND RECOMMENDATION

TO THE HONORABLE ARIZONA TRANSPORTATION BOARD:

The Intermodal Transportation Division has made a thorough investigation concerning the establishment and improvement of a portion of State Route 195 within the above referenced project.

This portion was previously established as a State Route and State Highway by the Arizona Transportation Board Resolution 2002-11-A-057, dated November 15, 2002, to perform pavement preservation improvements; Resolution 2002-11-A-058, dated November 15, 2002, established this portion as a State Route Plan with Advance Acquisition; Resolution 2008-03-A-013 established additional right of way as a state route for this upcoming construction project.

The new right of way required for widening improvements is now ready to be established into the State Highway System for the construction phase. Accordingly, it is necessary to establish and acquire the additional right of way for this project.

The additional right of way to be established and acquired for this improvement is depicted in Appendix "A" and delineated on maps and plans on file in the office of the State Engineer, Intermodal Transportation Division, Phoenix, Arizona, entitled "Right of Way Plans, YUMA AREA SERVICE Highway, Project N-900-A-800 / 195YU000H577401R."

May 16, 2008

RES. NO. 2008-05-A-020  
PROJECT: N-900-A-800 / 195YU000H577401R  
HIGHWAY: YUMA AREA SERVICE HIGHWAY  
SECTION: Yuma Area Service Highway  
ROUTE NO.: S.R. 195  
ENG. DIST.: YUMA  
COUNTY: YUMA

In the interest of public safety, necessity and convenience, I recommend that the area depicted in Appendix "A" be established and improved as a state highway, and that access be controlled.

I further recommend the acquisition of the new right of way, material for construction; haul roads and various easements necessary for or incidental to the improvement.

Pursuant to Arizona Revised Statutes Section 28-7046, I recommend the adoption of a resolution making this recommendation effective.

Respectfully submitted,

A handwritten signature in black ink, appearing to read "Victor M. Mendez" with a stylized flourish at the end.

VICTOR M. MENDEZ, Director  
Arizona Department of Transportation

May 16, 2008

RES. NO. 2008-05-A-020  
PROJECT: N-900-A-800 / 195YU000H577401R  
HIGHWAY: YUMA AREA SERVICE HIGHWAY  
SECTION: Yuma Area Service Highway  
ROUTE NO.: S.R. 195  
ENG. DIST.: YUMA  
COUNTY: YUMA

CERTIFICATION

I, VICTOR M. MENDEZ, Director of the Arizona Department of Transportation, do hereby certify that the foregoing is a true and correct copy from the minutes of the Transportation Board made in official session on May 16, 2008.

IN WITNESS WHEREOF I have hereunto set my hand and the official seal of the Transportation Board on May 16, 2008.



VICTOR M. MENDEZ, Director  
Arizona Department of Transportation

2008 5/16  
of 195YU000H577401R  
YUMA AREA SERVICE HIGHWAY  
YUMA AREA SERVICE HIGHWAY

YUMA AREA SERVICE HIGHWAY