

ARIZONA DEPARTMENT OF TRANSPORTATION
205 SOUTH 17TH AVENUE
R/W Operations, MD 612E
PHOENIX, AZ 85007-3213

SEPTEMBER 15, 2006

RES. NO. 2006-09-A-045
PROJECT: N-900-0-700 / 191AP328H555101R
HIGHWAY: ST. JOHNS - SANDERS
SECTION: Standard Parallel - Witch Well
ROUTE NO.: U.S. Route 191
ENG. DIST.: Globe
COUNTY: Apache

RESOLUTION OF ESTABLISHMENT

VICTOR M. MENDEZ, Director, Arizona Department of Transportation, on September 15, 2006, presented and filed with this Transportation Board his written report under Arizona Revised Statutes Section 28-7046, recommending the establishment of temporary construction easements necessary for the improvement of U.S. Route 191.

The area of temporary construction easements required for this improvement is depicted in Appendix "A" and delineated on maps and plans on file in the office of the State Engineer, Intermodal Transportation Division, Phoenix, Arizona, entitled "30% Design Plans, dated July 2006, ST. JOHNS - SANDERS Highway, Project N-900-0-700 / 191AP328H555101R."

WHEREAS temporary construction easements are needed beyond the existing right of way to Zuni River Bridge No. 334 to provide a detour road during the bridge replacement; and

WHEREAS because of these premises, this Board finds that public safety, necessity and convenience require the recommended improvement of said highway; therefore, be it

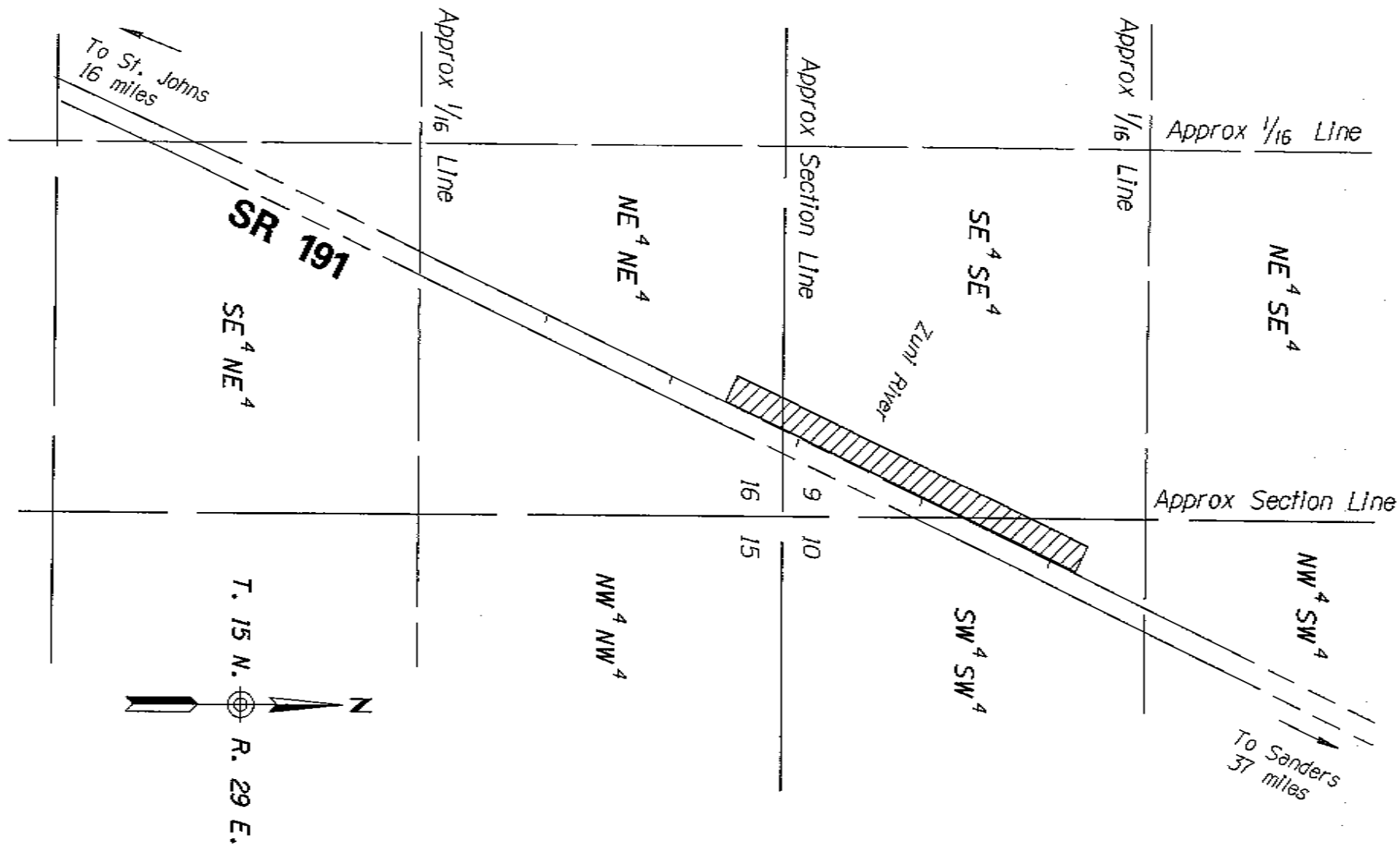
RESOLVED that the recommendation of the Director is adopted and made a part of this resolution; be it further

SEPTEMBER 15, 2006

RES. NO. 2006-09-A-045
PROJECT: N-900-0-700 / 191AP328H555101R
HIGHWAY: ST. JOHNS - SANDERS
SECTION: Standard Parallel - Witch Well
ROUTE NO.: U.S. Route 191
ENG. DIST.: Globe
COUNTY: Apache:

RESOLVED that the Director is hereby authorized to acquire by lawful means including condemnation authority, in accordance with Arizona Revised Statutes Section 28-7092, temporary construction easements or such other interest as is required, including material for construction, haul roads, and various easements in any property necessary for or incidental to the improvements as delineated on said maps and plans; be it further

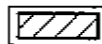
RESOLVED that the Director compensate the necessary parties for the Temporary Construction Easements to be acquired. Upon failure to acquire said lands by other lawful means, the Director is authorized to initiate condemnation proceedings.



THIS PLAT WAS DIGITALLY PRODUCED
FROM ARIZONA DEPARTMENT OF
TRANSPORTATION
GENERAL HIGHWAY MAP

RIGHT OF WAY PLANS SECTION
REVISED JULY 17, 2000

AREA OF
ESTABLISHMENT



APPENDIX "A"

191 AP 328 H5551 01R / N 900-0-700
ST JOHNS - SANDERS HWY
Standard Parallel - Witch Well
Apache County

DATE: SEPT. 15, 2006 SHEET: 2 OF 2

SEPTEMBER 15, 2006

RES. NO. 2006-09-A-045
PROJECT: N-900-0-700 / 191AP328H555101R
HIGHWAY: ST. JOHNS - SANDERS
SECTION: Standard Parallel - Witch Well
ROUTE NO.: U.S. Route 191
ENG. DIST.: Globe
COUNTY: Apache:

REPORT AND RECOMMENDATION

TO THE HONORABLE ARIZONA TRANSPORTATION BOARD:

The Intermodal Transportation Division has made a thorough investigation concerning the establishment and improvement of a portion of U.S. Route 191 within the above referenced project.

This portion was previously established as a state route and state highway designated U.S. Route 666 by Arizona Highway Commission Resolution dated June 28, 1935; various Resolutions established additional right of way for improvements thereof; thereafter Arizona Transportation Board Resolution 92-09-A-64, dated September 18, 1992, redesignated and renumbered U.S. Route 666 to U.S. Route 191.

This project involves improvements in and around Zuni River Bridge No. 334. Temporary construction easements outside the existing right of way are needed to provide a detour road during the bridge replacement. Accordingly, it is now necessary to establish and acquire the temporary construction easements needed.

The area of temporary construction easements required for this improvement is depicted in Appendix "A" and delineated on maps and plans on file in the office of the State Engineer, Intermodal Transportation Division, Phoenix, Arizona, entitled "30% Design Plans, dated July 2006, ST. JOHNS - SANDERS Highway, Project N-900-0-700 / 191AP328H555101R."

In the interest of public safety, necessity and convenience, I recommend that the temporary construction easements depicted in Appendix "A" be acquired in order to improve this portion of U.S. Route 191.

SEPTEMBER 15, 2006

RES. NO. 2006-09-A-045
PROJECT: N-900-0-700 / 191AP328H555101R
HIGHWAY: ST. JOHNS - SANDERS
SECTION: Standard Parallel - Witch Well
ROUTE NO.: U.S. Route 191
ENG. DIST.: Globe
COUNTY: Apache:

I further recommend the acquisition of material for construction, haul roads and various easements necessary for or incidental to the improvement.

Pursuant to Arizona Revised Statutes Section 28-7046, I recommend the adoption of a resolution making this recommendation effective.

Respectfully submitted,

A handwritten signature in black ink, appearing to read "Victor M. Mendez", written in a cursive style.

VICTOR M. MENDEZ, Director
Arizona Department of Transportation

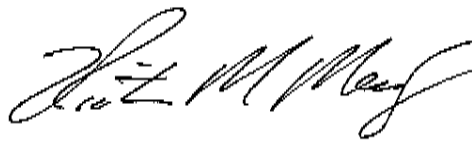
SEPTEMBER 15, 2006

RES. NO. 2006-09-A-045
PROJECT: N-900-0-700 / 191AP328H555101R
HIGHWAY: ST. JOHNS - SANDERS
SECTION: Standard Parallel - Witch Well
ROUTE NO.: U.S. Route 191
ENG. DIST.: Globe
COUNTY: Apache:

CERTIFICATION

I, VICTOR M. MENDEZ, Director of the Arizona Department of Transportation, do hereby certify that the foregoing is a true and correct copy from the minutes of the Transportation Board made in official session on September 15, 2006.

IN WITNESS WHEREOF I have hereunto set my hand and the official seal of the Transportation Board on September 15, 2006.



VICTOR M. MENDEZ, Director
Arizona Department of Transportation

03V0819A

Arizona Department of Transportation
1000 North Central Expressway
Phoenix, Arizona 85004