

RES. NO. 2000-06-A-055  
PROJECT: 600-8-802 / 202LMA000H492101R  
HIGHWAY: RED MOUNTAIN FREEWAY  
SECTION: Country Club Dr. - Gilbert Road  
ROUTE NO.: S.R. 202 Loop  
ENG. DIST.: M  
COUNTY: Maricopa

AMENDED RESOLUTION OF ESTABLISHMENT

MARY E. PETERS, Director, Arizona Department of Transportation, on June 09, 2000, presented and filed with this Transportation Board her written report under Arizona Revised Statutes Section 28-7046, recommending the amendment of Resolution 2000-02-A-011, dated February 18, 2000, to show a design change.

The amended right of way is depicted in Appendix "A", and delineated on maps and plans on file in the office of the State Engineer, Intermodal Transportation Division, Phoenix, Arizona, entitled "Right of Way Plans, Red Mountain Freeway, Project 600-8-802 / 202LMA000H492101R."

WHEREAS the design change requires a modification of the area to be acquired; and

WHEREAS because of these premises, this Board finds public safety, necessity and convenience require the recommended amendment of Resolution 2000-02-A-011 to show said design change, and that access to the highway shall be controlled as delineated on the maps and plans; therefore, be it

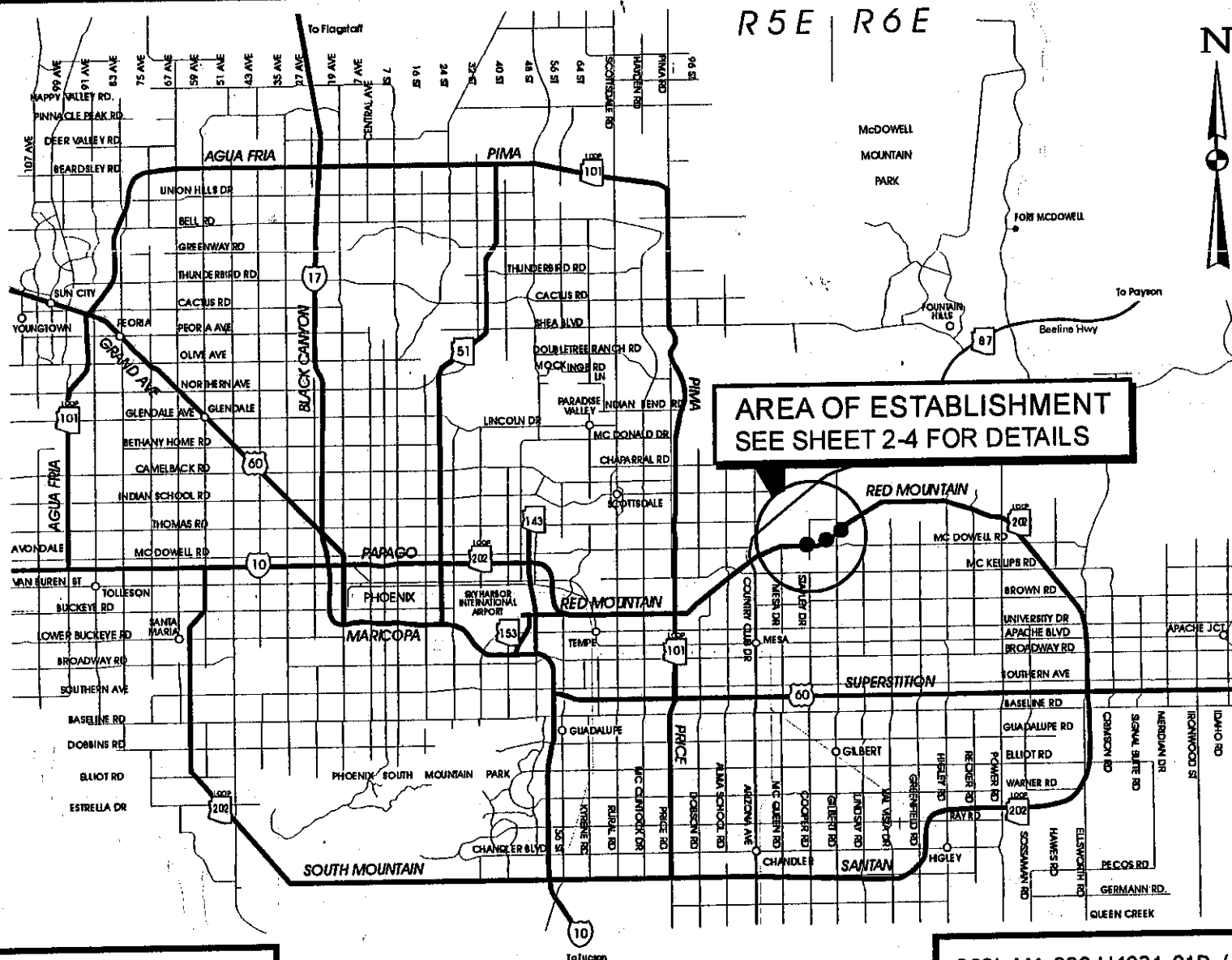
RESOLVED that the recommendation of the Director is adopted and made a part of this resolution; be it further

RESOLVED that Resolution 2000-02-A-011 is hereby amended, and that the modified area of right of way is designated a controlled access state route and state highway, and ingress and egress to and from the highway and to and from abutting, adjacent, or other lands be denied, controlled, or regulated as indicated by the maps and plans. Where no access is shown, none will be allowed to exist; be it further

RES. NO. 2000-06-A-055  
PROJECT: 600-8-802 / 202LMA000H492101R  
HIGHWAY: RED MOUNTAIN FREEWAY  
SECTION: Country Club Dr. - Gilbert Road  
ROUTE NO.: S.R. 202 Loop  
ENG. DIST.: M  
COUNTY: Maricopa

RESOLVED that the Director is authorized to acquire by lawful means, including exchanges, in accordance with Arizona Revised Statutes Section 28-7092, an estate in fee, or such other interest as is required, including material for construction, haul roads, and various easements in any property necessary for or incidental to the improvements as delineated on said maps and plans; be it further

RESOLVED that the Director secure an appraisal of the property to be acquired and that necessary parties be compensated. Upon failure to acquire the lands by other lawful means, the Director is authorized to initiate condemnation proceedings.



THIS PLAT WAS PHOTOGRAPHICALLY  
REPRODUCED FROM  
GENERAL HIGHWAY MAP

## MARICOPA COUNTY, ARIZONA

ARIZONA DEPARTMENT OF TRANSPORTATION  
HIGHWAYS DIVISION  
PHOTOGRAMMETRY AND MAPPING  
IN COOPERATION WITH  
US DEPARTMENT OF TRANSPORTATION  
FEDERAL HIGHWAY ADMINISTRATION

AMENDED AREA OF  
ESTABLISHMENT ●●●●

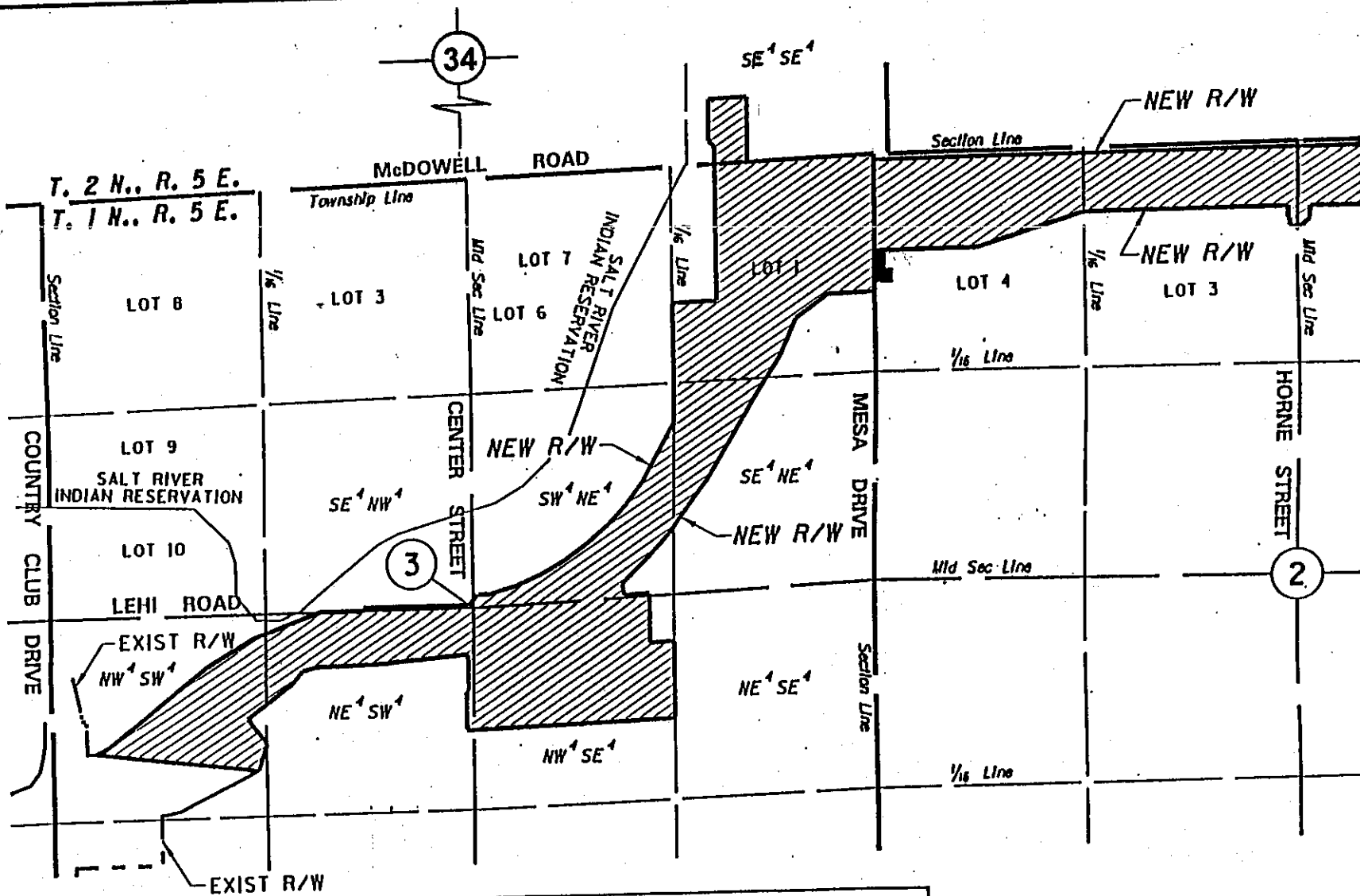
## APPENDIX A

202L MA 000 H4921 01R /  
600-8-802

RED MOUNTAIN FREEWAY 202L  
Country Club Drive - Gilbert Road  
Maricopa County

Date 6-9-2000

SHEET 1 OF 4



INFORMATION ON THIS PLAT  
WAS OBTAINED FROM  
R/W MAP •D-7-T-900

PREVIOUS AREA OF  
ESTABLISHMENT



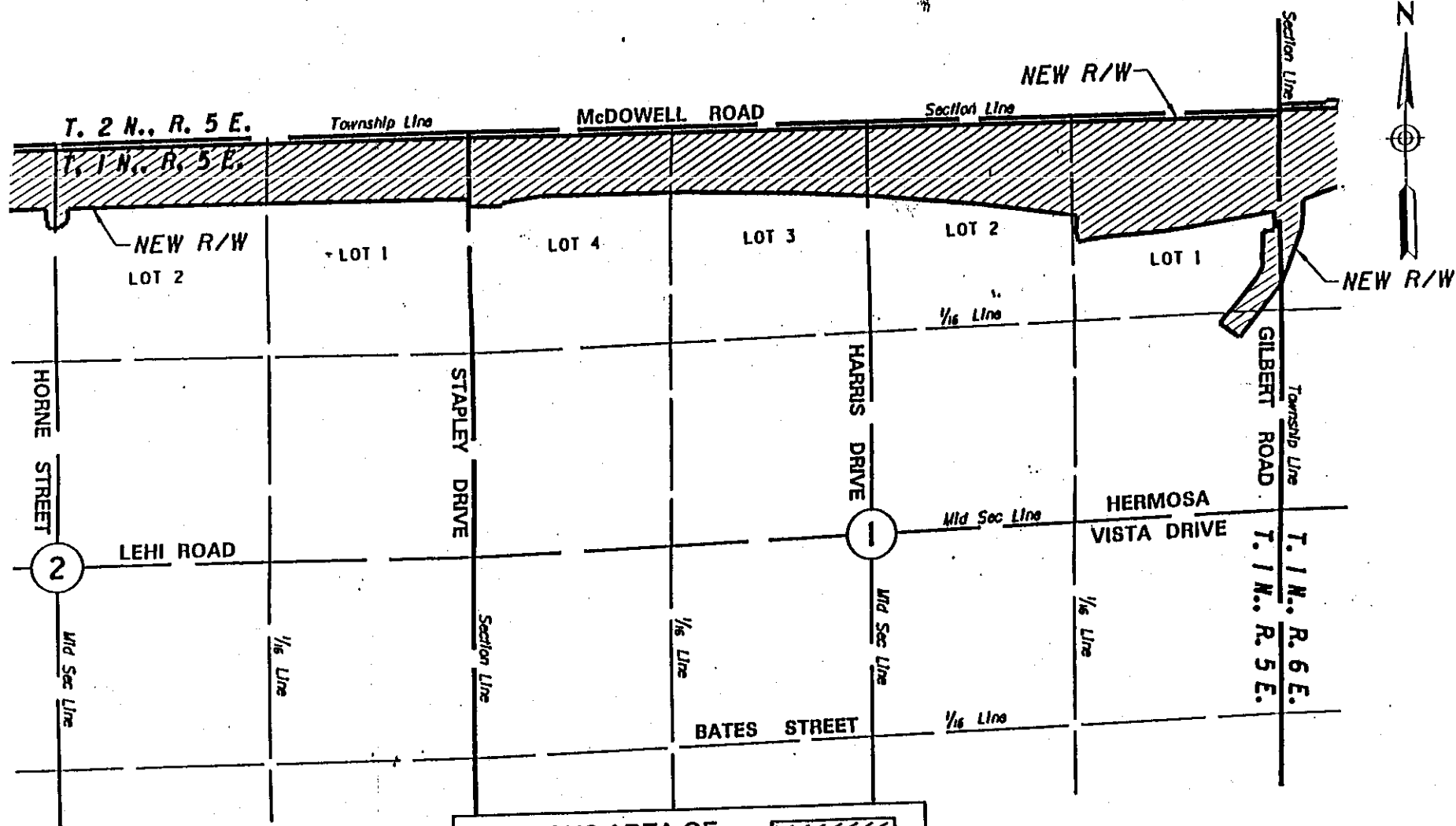
AMENDED AREA OF  
ESTABLISHMENT



APPENDIX "A"

202L MA 000 H4921 01R  
STP 600-8-802  
Country Club Drive – Gilbert Road  
RED MOUNTAIN FREEWAY  
Maricopa County

Date: June 9, 2000 SHEET 2 OF 4



PREVIOUS AREA OF  
ESTABLISHMENT



AMENDED AREA OF  
ESTABLISHMENT

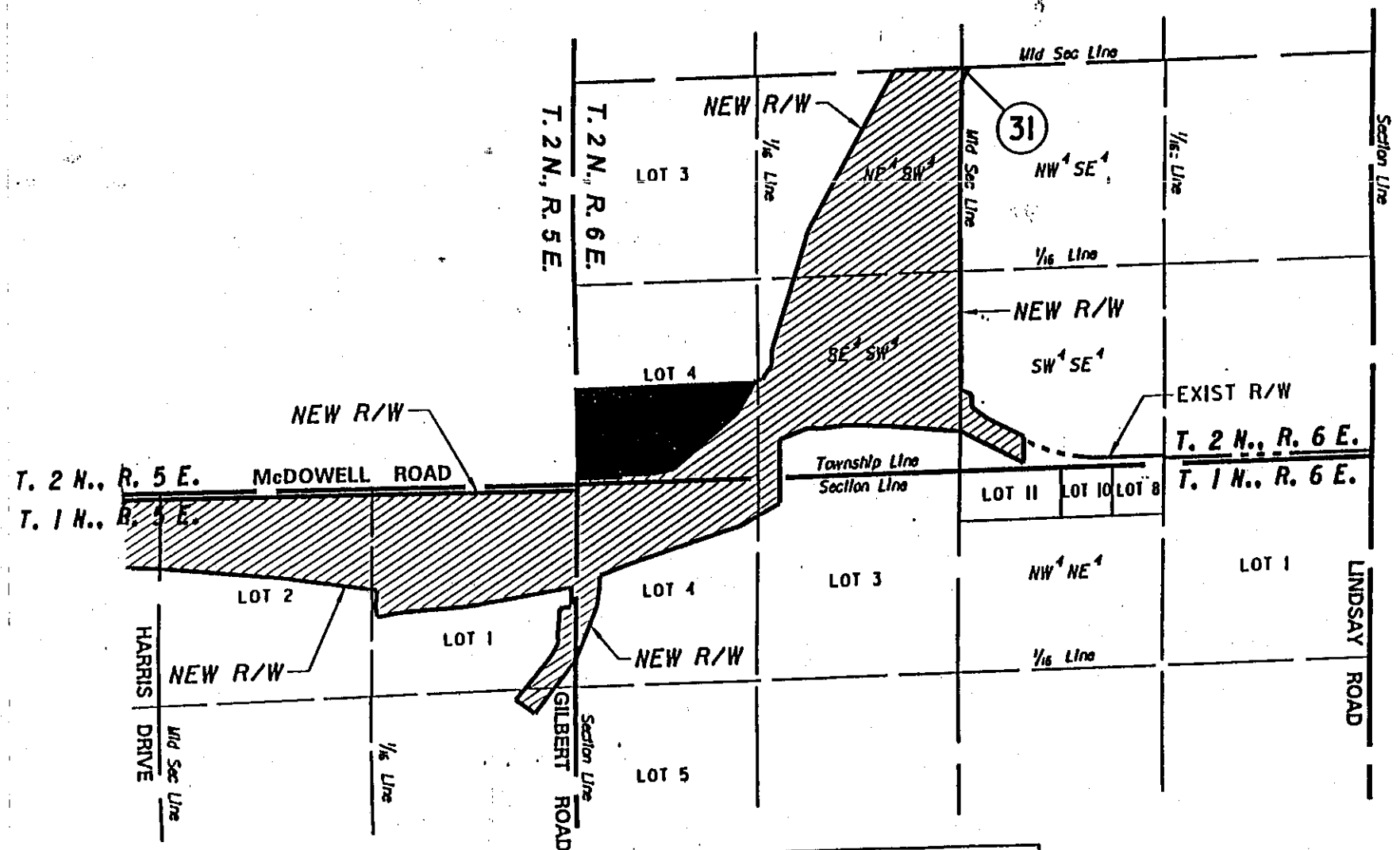
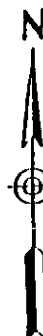


APPENDIX "A"



INFORMATION ON THIS PLAT  
WAS OBTAINED FROM  
R/W MAP •D-7-T-900

202L MA 000 H4921 01R  
STP 600-8-802  
Country Club Drive – Gilbert Road  
RED MOUNTAIN FREEWAY  
Maricopa County

Date: June 9, 2000 SHEET 3 OF 4



INFORMATION ON THIS PLAT  
WAS OBTAINED FROM  
R/W MAP "D-7-T-900

PREVIOUS AREA OF ESTABLISHMENT	
AMENDED AREA OF ESTABLISHMENT	

APPENDIX "A"

202L MA 000 H4921 01R  
STP 600-8-802  
Country Club Drive - Gilbert Road  
RED MOUNTAIN FREEWAY  
Maricopa County  
  
Date: June 9, 2000 SHEET 4 OF 4

RES. NO. 2000-06-A-055  
PROJECT: 600-8-802 / 202LMA000H492101R  
HIGHWAY: RED MOUNTAIN FREEWAY  
SECTION: Country Club Dr. - Gilbert Road  
ROUTE NO.: S.R. 202 Loop  
ENG. DIST.: M  
COUNTY: Maricopa

REPORT AND RECOMMENDATION

TO THE HONORABLE ARIZONA TRANSPORTATION BOARD:

The Intermodal Transportation Division has made a thorough investigation concerning the amended establishment and improvement of State Route 202 Loop within the above referenced project.

This portion was previously established as a state highway by Arizona Transportation Board Resolution 2000-02-A-011, dated February 18, 2000. Due to design change, the area to be acquired has been modified. It is now necessary to amend the previous resolution to show the design change.

The amended right of way is depicted in Appendix "A" and delineated on maps and plans on file in the office of the State Engineer, Intermodal Transportation Division, Phoenix, Arizona, entitled "Right of Way Plans, Red Mountain Freeway, Project 600-8-802, 202LMA000H492101R"

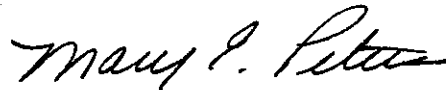
In the interest of public safety, necessity, and convenience, I recommend the amendment of Resolution 2000-02-A-011, and that the modified area of right of way depicted in Appendix "A" be established and improved as a state route and state highway, and that access be controlled as shown on said maps and plans.

I further recommend the acquisition of the modified right of way, material for construction, haul roads and various easements necessary for or incidental to the improvement.

RES. NO. 2000-06-A-055  
PROJECT: 600-8-802 / 202LMA000H492101R  
HIGHWAY: RED MOUNTAIN FREEWAY  
SECTION: Country Club Dr. - Gilbert Road  
ROUTE NO.: S.R. 202 Loop  
ENG. DIST.: M  
COUNTY: Maricopa

Pursuant to Arizona Revised Statutes Section 28-7046, I recommend the adoption of a resolution making this recommendation effective.

Respectfully submitted,

A handwritten signature in cursive script, appearing to read "Mary E. Peters".

MARY E. PETERS, Director  
Arizona Department of Transportation