

FEBRUARY 18, 2000

RES. NO. 2000-02-A-011  
PROJECT: 600-8-802 / 202LMA000H492101R  
HIGHWAY: RED MOUNTAIN FREEWAY  
SECTION: Country Club Drive - Gilbert Road  
ROUTE NO.: S.R. 202L  
ENG. DIST.: M  
COUNTY: Maricopa

RESOLUTION OF ESTABLISHMENT

MARY E. PETERS, Director, Arizona Department of Transportation, on February 18, 2000, presented and filed with this Transportation Board her written report under Arizona Revised Statutes Section 28-7046, recommending the establishment of a portion of the State Route Preliminary Transportation Corridor of the Red Mountain Freeway, State Route 202 Loop, as a state highway.

The portion of right of way to be established as a State Highway is depicted in Appendix "A", and delineated on maps and plans on file in the office of the State Engineer, Intermodal Transportation Division, Phoenix, Arizona, entitled "Right of Way Plans, RED MOUNTAIN FREEWAY, Project 600-8-802 / 202LMA000H492101R."

WHEREAS an additional portion of the Corridor is ready for construction; and

WHEREAS construction by the Department cannot begin until the portion of the State Route Corridor is established as a State Highway; and

WHEREAS because of these premises, this Board finds that the public safety, necessity and convenience require the recommended improvement of the highway to be access controlled as delineated on the maps and plans; therefore, be it

RESOLVED that the recommendation of the Director is adopted and made a part of this resolution; be it further

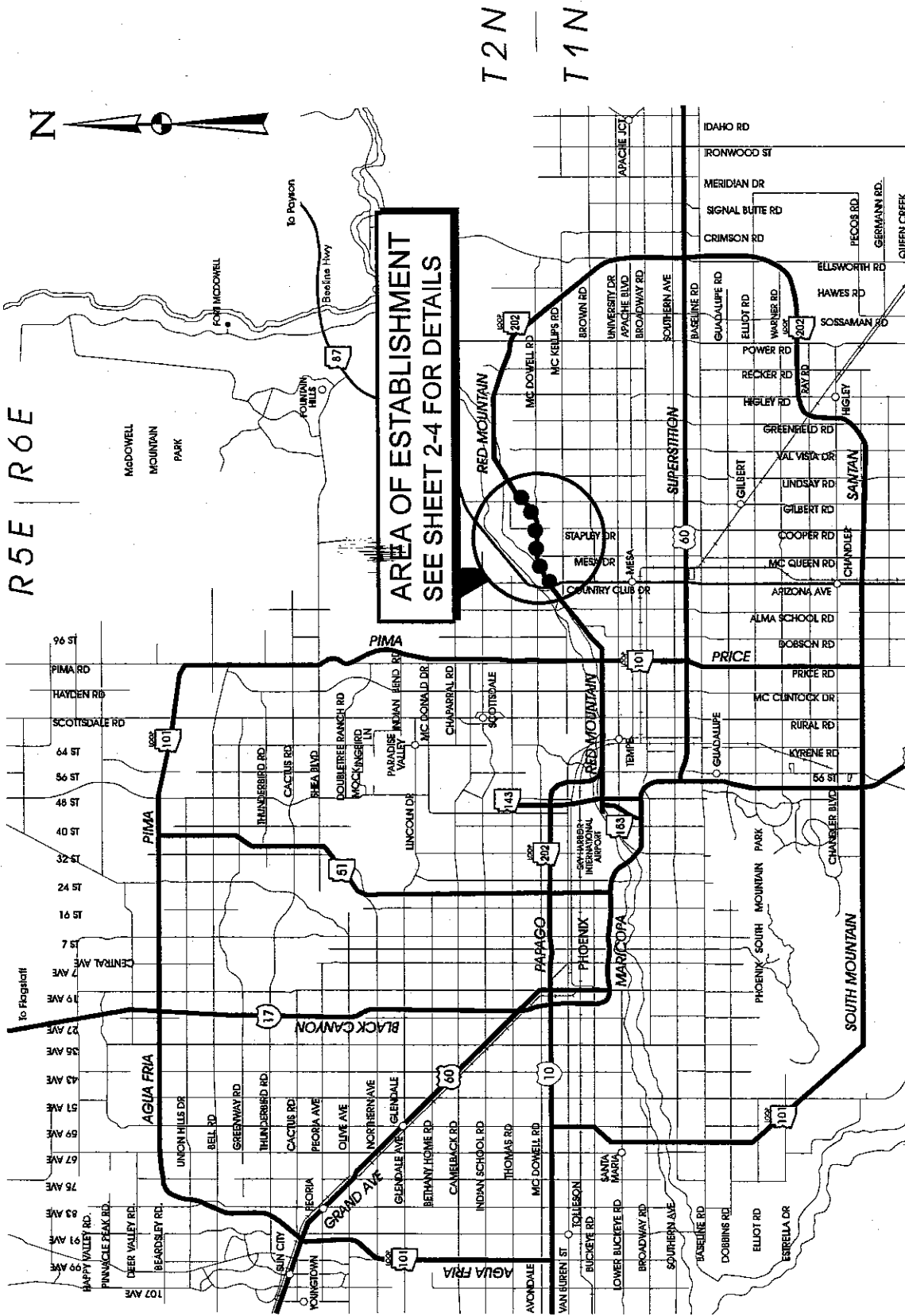
RESOLVED that the portion of right of way as depicted is designated an access controlled State Highway; be it further

FEBRUARY 18, 2000

RES. NO. 2000-02-A-011  
PROJECT: 600-8-802 / 202LMA000H492101R  
HIGHWAY: RED MOUNTAIN FREEWAY  
SECTION: Country Club Drive - Gilbert Road  
ROUTE NO.: S.R. 202L  
ENG. DIST.: M  
COUNTY: Maricopa

RESOLVED that the ~~the~~ Director is hereby authorized to acquire by lawful means, including exchanges, in accordance with Arizona Revised Statutes Section 28-7092, an estate in fee, or such other interest as is required, including material for construction, haul roads, and various easements in any property necessary for or incidental to the improvements as delineated on said maps and plans; be it further

RESOLVED that the Director secure an appraisal of the property to be acquired and that necessary parties be compensated. Upon failure to acquire said lands by other lawful means, the Director is authorized to initiate condemnation proceedings.



THIS PLAT WAS PHOTOGRAPHICALLY  
REPRODUCED FROM  
GENERAL HIGHWAY MAP

MARICOPA COUNTY, ARIZONA

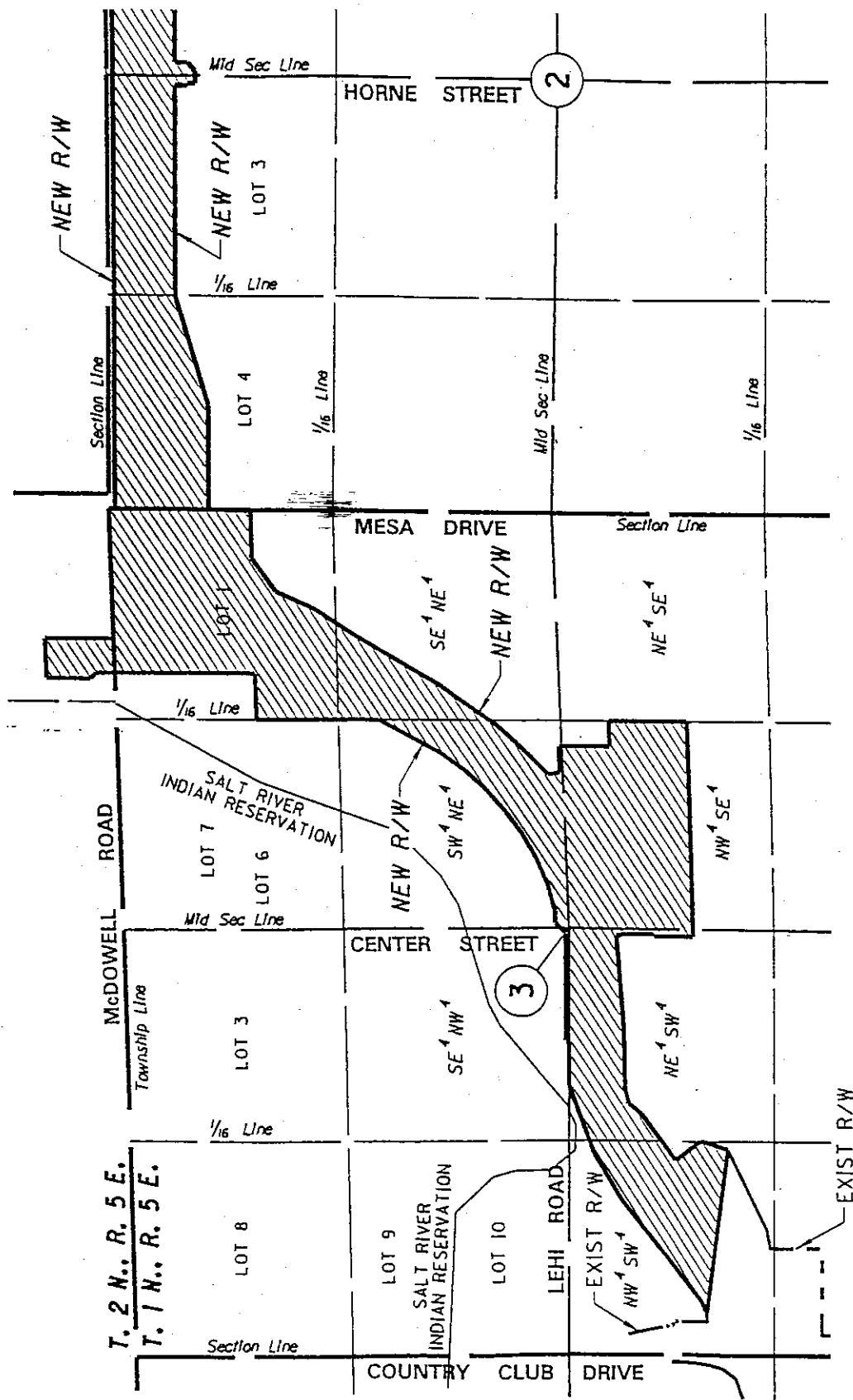
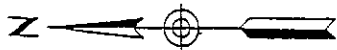
ARIZONA DEPARTMENT OF TRANSPORTATION  
HIGHWAYS DIVISION  
PHOTOGRAMMETRY AND MAPPING  
IN COOPERATION WITH  
US DEPARTMENT OF TRANSPORTATION  
FEDERAL HIGHWAY ADMINISTRATION

AREA OF  
ESTABLISHMENT

APPENDIX A

202L MA 000 H4921 01R /  
600-8-802  
RED MOUNTAIN FREEWAY 202L  
Country Club Drive - Gilbert Road  
Maricopa County

Date 2-18-2000 SHEET 1 OF 4



202L MA 000 H4921 01R

STP 600-8-802

Country Club Drive - Gilbert Road

RED MOUNTAIN FREEWAY

Maricopa County

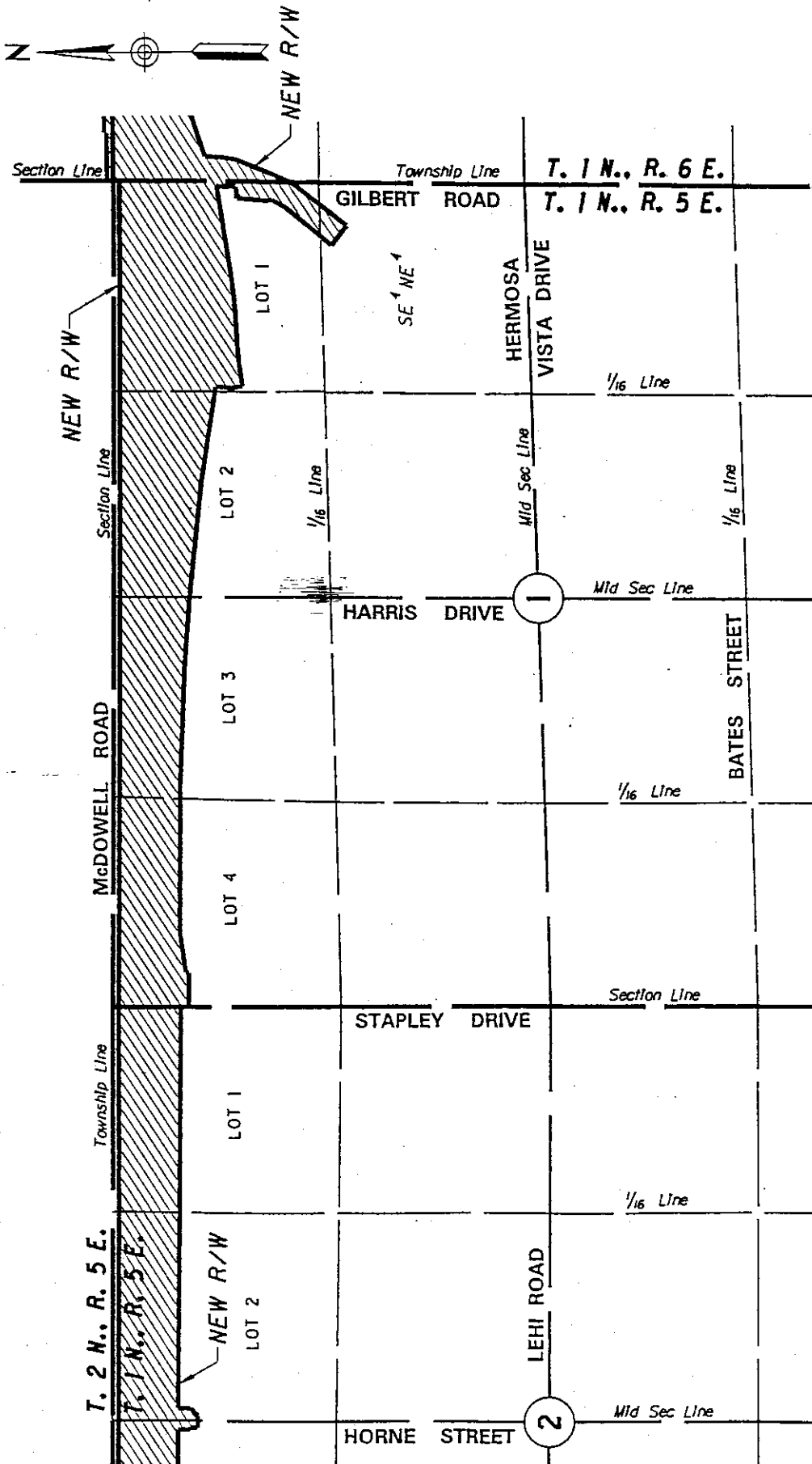
2-18-2000

Page 2 of 4

AREA OF  
ESTABLISHMENT

APPENDIX "A"

INFORMATION ON THIS PLAT  
WAS OBTAINED FROM  
R/W MAP •D-7-T-900



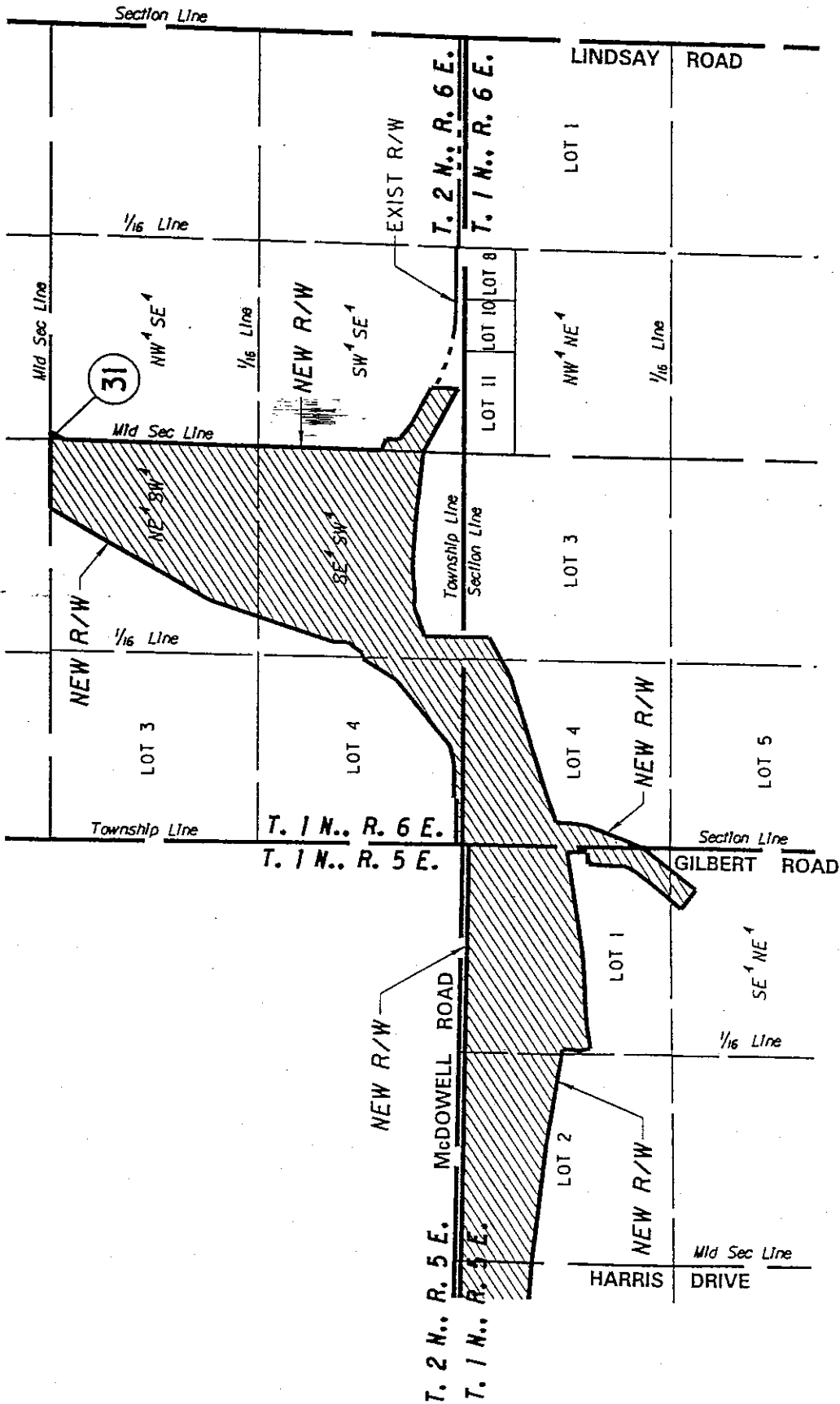
202L MA 000 H4921 01R  
 STP 600-8-802  
 Country Club Drive - Gilbert Road  
 RED MOUNTAIN FREEWAY  
 Maricopa County

2-18-2000

AREA OF  
 ESTABLISHMENT

APPENDIX "A"

INFORMATION ON THIS PLAT  
 WAS OBTAINED FROM  
 R/W MAP •D-7-T-900



202L MA 000 H4921 01R  
STP 600-8-802

Country Club Drive - Gilbert Road  
RED MOUNTAIN FREEWAY  
Maricopa County

2-18-2000

Page 4 of 4

AREA OF  
ESTABLISHMENT

APPENDIX "A"

INFORMATION ON THIS PLAT  
WAS OBTAINED FROM  
R/W MAP •D-7-T-900

FEBRUARY 18, 2000

RES. NO. 2000-02-A-011  
PROJECT: 600-8-802 / 202LMA000H492101R  
HIGHWAY: RED MOUNTAIN FREEWAY  
SECTION: Country Club Drive - Gilbert Road  
ROUTE NO.: S.R. 202L  
ENG. DIST.: M  
COUNTY: Maricopa

REPORT AND RECOMMENDATION

TO THE HONORABLE ARIZONA TRANSPORTATION BOARD:

The Intermodal Transportation Division has made a thorough investigation, including a public hearing for location and design, of the Preliminary Transportation Corridor of the Red Mountain Freeway, State Route 202 Loop, within the above referenced project.

This portion was previously established as a State Route by Arizona Transportation Board Resolution 85-04-A-032, dated April 26, 1985, designated S.R. 216; Resolution 87-11-A-105, dated December 18, 1987, redesignated S.R. 216 to S.R. 202 Loop; and Resolution 88-12-A-115, dated December 16, 1988, refined the State Route Plan Corridor and authorized advance acquisition.

This portion of S.R. 202 Loop is now ready for construction. Accordingly, it is now necessary to establish that portion of the State Route Corridor of the Red Mountain Freeway as a state highway and that access be controlled.

The portion of right of way to be established as a State Highway is depicted in Appendix "A" and delineated on maps and plans on file in the office of the State Engineer, Intermodal Transportation Division, Phoenix, Arizona, entitled "Right of Way Plans, RED MOUNTAIN FREEWAY, Project 600-8-802 / 202LMA000H492101R."

In the interest of public safety, necessity and convenience, I recommend that the area depicted in Appendix "A" be established and improved as a State Highway.

FEBRUARY 18, 2000

RES. NO. 2000-02-A-011  
PROJECT: 600-8-802 / 202LMA000H492101R  
HIGHWAY: RED MOUNTAIN FREEWAY  
SECTION: Country Club Drive - Gilbert Road  
ROUTE NO.: S.R. 202L  
ENG. DIST.: M  
COUNTY: Maricopa

Pursuant to Arizona Revised Statutes Section 28-7046, I recommend the adoption of a resolution making this recommendation effective.

Respectfully submitted,

A handwritten signature in cursive script, reading "Mary E. Peters".

MARY E. PETERS, Director  
Arizona Department of Transportation



FEBRUARY 18, 2000

RES. NO. 2000-02-A-011  
PROJECT: 600-8-802 / 202LMA000H492101R  
HIGHWAY: RED MOUNTAIN FREEWAY  
SECTION: Country Club Drive - Gilbert Road  
ROUTE NO.: S.R. 202L  
ENG. DIST.: M  
COUNTY: Maricopa

CERTIFICATION

I, MARY E. PETERS, Director of the Arizona Department of Transportation, do hereby certify that the foregoing is a true and correct copy from the minutes of the Transportation Board made in official session on February 18, 2000.

IN WITNESS WHEREOF I have hereunto set my hand and the official seal of the Transportation Board on February 18, 2000.

*Mary E. Peters*

MARY E. PETERS, Director  
Arizona Department of Transportation